



## PRODUCT REFERENCE GUIDE



# PRODUCT REFERENCE GUIDE

## Table of Contents

EPDM Accessories .....	1
Thermoplastic Accessories.....	3
Fasteners & Plates.....	7
Adhesives & Sealants .....	11
Insulation Reference .....	17
EPDM Reference .....	21
TPO/PVC Reference .....	23

# Sure-Seal/Sure-White EPDM Accessories



**Sure-Seal<sup>®</sup> EPDM**  
Roofing Systems

**Sure-White<sup>®</sup> EPDM**  
Roofing Systems

## PRESSURE-SENSITIVE SECURTAPE<sup>™</sup>



Fully cured synthetic rubber product used for splicing cured EPDM membrane in ballasted, adhered and mechanically fastened roofing systems.

### Sizes Available:

3" x 100' – Product Number: 300465 – Black  
3" x 100' – Product Number: 303260 – White  
6" x 100' – Product Number: 302952 – Black  
6" x 100' – Product Number: 317501 – White

### Quantity Per Box:

4 rolls (3"), 2 rolls (6")

## PRESSURE-SENSITIVE CURED COVERSTRIP



Cured EPDM membrane laminated to a synthetic rubber adhesive makes this product the optimal solution to overlay seam fastening plates, stripping in seams and metal edgings or making roof repairs.

### Sizes Available:

6" x 100' – Product Number: 308701 – Black  
6" x 100' – Product Number: 308910 – White  
9" x 100' – Product Number: 308839 – Black  
9" x 100' – Product Number: 309121 – White  
12" x 50' – Product Number: 317598 – Black  
12" x 50' – Product Number: 317596 – White

### Quantity Per Box:

2 rolls (6"), 1 roll (9" and 12")

## PRESSURE-SENSITIVE CURB FLASHING



Cured EPDM membrane pre-cut to 20" wide with 6" PS SecurTape already applied. This product provides the most efficient way to flash curbs and short walls.

### Sizes Available:

20" x 50' – Product Number: 308705 – Black  
20" x 50' – Product Number: 309112 – White

### Quantity Per Box: 1 roll

### FULLY PRESSURE-SENSITIVE CURB FLASHING

*Also Available (Not shown)*

### Sizes Available:

20" x 50' – Product Number: 315839 – Black

### Quantity Per Box: 1 roll

## PRESSURE-SENSITIVE ELASTOFORM FLASHING



Uncured EPDM laminated to synthetic rubber adhesive. Pressure-Sensitive Elastoform Flashing can be used to flash corners, pipes and other penetrations.

### Sizes Available:

6" x 100' – Product Number: 310443 – Black  
6" x 100' – Product Number: 310434 – White  
9" x 50' – Product Number: 303162 – Black  
9" x 50' – Product Number: 309950 – White  
12" x 50' – Product Number: 305723 – Black  
12" x 50' – Product Number: 309951 – White

### Quantity Per Box:

2 rolls (6"), 1 roll (9" and 12")

## PRESSURE-SENSITIVE RUSS



Reinforced Universal Securement Strip RUSS combines reinforced EPDM with 3"-wide Pressure-Sensitive SecurTape for additional membrane securement at the perimeter and penetrations. A 9" version with 3"-wide Pressure-Sensitive SecurTape on both sides permits field securement of perimeter sheeting on mechanically fastened systems.

### Sizes Available:

6" RUSS – Product Number: 300490 – Black  
6" RUSS – Product Number: 309268 – White

*Use with all EPDM Systems*

9" RUSS – Product Number: 300489

*Use with Mechanically Fastened EPDM Systems*

### Quantity Per Box:

2 rolls (6"), 1 roll (9")

## PRESSURE-SENSITIVE OVERLAYMENT STRIP



Semi-cured EPDM laminated to a synthetic rubber adhesive. It is designed for stripping in drip edges, all types of metal edging and Carlisle Seam Fastening Plates.

### Sizes Available:

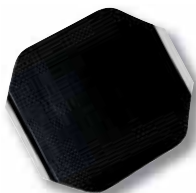
6" x 100' – Product Number: 302319 – Black  
9" x 100' – Product Number: 302281 – Black  
12" x 50' – Product Number: 317600 – Black

### Quantity Per Box:

2 rolls (6"), 1 roll (9" and 12")

# Sure-Seal/Sure-White EPDM Accessories

## PRESSURE-SENSITIVE T-JOINT COVERS



Uncured EPDM laminated to a synthetic rubber adhesive. Required to overlay T-Joint intersections of splices in the field as well as at angle changes for wall flashings. An additional 12" x 12" T-Joint Cover is required for 30-Year Warranty Systems.

### Sizes Available:

6" x 6" – Product Number: 303100 – Black  
12" x 12" – Product Number: 305089 – Black

**Quantity Per Box:** 20

## PRESSURE-SENSITIVE INSIDE/OUTSIDE CORNERS



Uncured EPDM laminated to a synthetic rubber adhesive. The pre-cut corners greatly reduce installation time and can be used for inside and outside corner installations.

### Sizes Available:

7" x 9" – Product Number: 300199 – Black  
7" x 9" – Product Number: 310310 – White

**Quantity Per Box:** 20

## PRESSURE-SENSITIVE POURABLE SEALER POCKETS



Uncured Sure-Seal EPDM Flashing with a synthetic rubber adhesive and a 2" support strip pre-applied to the flashing. Sizes can be combined to form larger pockets when required.

### Sizes Available:

4" diameter – Product Number: 300208 – Black  
6" diameter – Product Number: 300209 – Black  
6" diameter – Product Number: 316243 – White  
8" diameter – Product Number: 300210 – Black

**Quantity Per Box:** 12

## PRESSURE-SENSITIVE PIPE SEALS



Cured EPDM with a synthetic rubber adhesive. PS Pipe Seals increase the speed and ease of installation.

### Sizes Available:

½" – 3" – Product Number: 300204 – Black  
1" – 6" – Product Number: 309750 – Black  
1" – 6" – Product Number: 316593 – White

**Quantity Per Box:** 10

## PRESSURE-SENSITIVE WALKWAY PADS



Cured EPDM with a synthetic rubber adhesive. Pressure-Sensitive Walkway Pads are designed to protect the Carlisle EPDM membrane in areas exposed to repetitive foot traffic.

### Sizes Available:

30" x 30" – Product Number: 300829 – Black  
30" x 30" – Product Number: 309589 – White

**Quantity Per Pallet:** 50

## PIPE SUPPORTS



An extruded EPDM product used to support steel pipe, electrical conduit, PVC pipe and copper tubing on Carlisle's EPDM, TPO and PVC roofing systems.

### Sizes Available:

Mini: ½" - 1½" – Product Number: 309403  
Small: ¾" - 2" – Product Number: 309402  
Large: 2½" - 5" – Product Number: 309404

### Quantity Per Box:

20 (Mini and Small), 10 (Large)



# Thermoplastic Accessories

**Sure-Weld TPO**  
Roofing Systems

**Sure-Flex PVC**  
Roofing Systems



## REINFORCED & NON-REINFORCED OVERLAYMENT



Pre-slit reinforced membrane used to overlay fasteners, plates and to overlay end laps on FleeceBACK® and Self-Adhering Technology (SAT™) membranes.

### TPO

#### Sizes Available:

##### 45-mil

6" x 100' – Product Number: 300485 – White

6" x 100' – Product Number: 300486 – Gray

6" x 100' – Product Number: 302811 – Tan

##### 60-mil

9" x 50' – Product Number: 310419 – White

9" x 50' – Product Number: 310417 – Gray

9" x 50' – Product Number: 310418 – Tan

##### 80-mil

9" x 50' – Product Number: 318404 – White

**Quantity Per Box:** 3 rolls (6"), 2 rolls (9")

### PVC

#### 60-mil

6" x 100' – Product Number: 310360 – White (Non-reinforced)

6" x 100' – Product Number: 324792 – Gray/Tan (Non-reinforced)

8" x 80' – Product Number: 318669 – White (KEE HP Reinforced)

#### 80-mil

8" x 65' – Product Number: 318670 – White (KEE HP Reinforced)

8" x 65' – Product Number: 324413 – Gray (KEE HP Reinforced)

8" x 65' – Product Number: 324414 – Tan (KEE HP Reinforced)

8" x 65' – Product Number: 324000 – White (Reinforced Coverstrip)

8" x 65' – Product Number: 324045 – Gray Reinforced Coverstrip)

8" x 65' – Product Number: 324046 – Tan (Reinforced Coverstrip)

**Quantity Per Box:** 2 rolls (60-mil), 1 roll (80-mil)

## TPO PRESSURE-SENSITIVE RUSS



Available in 10" RUSS (shown) and used in place of narrow-width sheets to secure membrane in the perimeter of the roof on mechanically fastened systems. 6" RUSS is also available and is used to secure membrane at the base of vertical walls for additional membrane securement without penetrating the sheet.

#### Sizes Available:

6" x 100' – Product Number: 303373

10" x 100' – Product Number: 305442

**Quantity Per Box:** 1 roll (10"), 2 rolls (6")

## PVC YELLOW WARNING STRIP



Reinforced PVC Yellow Warning Strip can be used on PVC to indicated roof edges or other hazards.

#### Sizes Available:

12" x 150' – Product Number: 322980

**Quantity Per Box:** 1 roll

## FLASHING



Non-reinforced thermoplastic membrane used to field-fabricate pipe flashings and scuppers when the use of a pre-molded accessory is not feasible.

### TPO

#### Sizes Available: 60-mil

12" x 50' – Product Number: 300473 – White

12" x 50' – Product Number: 300479 – Gray

12" x 50' – Product Number: 300476 – Tan

24" x 50' – Product Number: 300474 – White

24" x 50' – Product Number: 300480 – Gray

24" x 50' – Product Number: 300477 – Tan

**Quantity Per Box:** 1 roll

### PVC

#### Sizes Available: All 60-mil

12" x 50' – Product Number: 323792 – White/White

12" x 50' – Product Number: 323794 – Gray/Tan

24" x 50' – Product Number: 323793 – White/White

24" x 50' – Product Number: 323795 – Gray/Tan

**Quantity Per Box:** 1 roll

## TPO PRESSURE-SENSITIVE COVERSTRIP



Non-reinforced TPO laminated to pressure-sensitive tape used for stripping in flat metal flanges such as shop-bent drip edge.

#### Sizes Available:

6" x 100' – Product Number: 303102 – White

6" x 100' – Product Number: 303103 – Gray

6" x 100' – Product Number: 303104 – Tan

**Quantity Per Box:** 2 rolls



### YELLOW PS COVERSTRIP

Non-reinforced yellow TPO coverstrip can be used on TPO or EPDM to indicate roof edges or other hazards.

#### Sizes Available:

12" x 100' – Product Number: 318250

**Quantity Per Box:** 1 roll

# Thermoplastic Accessories

## SQUARE TUBING WRAPS



Fabricated using 60-mil reinforced Sure-Weld® and Sure-Flex™ membrane, square tubing wraps are designed to flash square metal tubing. A split and overlap tab are incorporated into these parts to allow the flashings to be opened and wrapped around a square penetration with an obstruction. Other sizes and colors available through special order.

### TPO

#### Sizes Available:

3" x 3" – Product Number: 305576 – White  
 3" x 3" – Product Number: 000000 – Gray  
 3" x 3" – Product Number: 305576 – Tan  
 4" x 4" – Product Number: 305577 – White  
 4" x 4" – Product Number: 000000 – Gray  
 4" x 4" – Product Number: 305577 – Tan  
 5" x 5" – Product Number: 305578 – White  
 3" x 3" – Product Number: 000000 – Gray  
 5" x 5" – Product Number: 305578 – White  
 5" x 5" – Product Number: 305578 – Tan  
 6" x 6" – Product Number: 305579 – White  
 6" x 6" – Product Number: 000000 – Gray  
 6" x 6" – Product Number: 305579 – Tan

Quantity Per Box: 8

### PVC

#### Sizes Available:

3" x 3" – Product Number: 307742 – White  
 4" x 4" – Product Number: 307745 – White  
 6" x 6" – Product Number: 307748 – White  
 3" x 3" – Product Number: 307743 – Gray  
 4" x 4" – Product Number: 307746 – Gray  
 6" x 6" – Product Number: 307749 – Gray

Quantity Per Box: 8

## MOLDED PIPE SEALS



Injection-molded, pre-formed flashings.

### TPO

#### Sizes Available:

¾"– 8" diameter – Product Number: 316534 – White  
 ¾"– 8" diameter – Product Number: 316536 – Tan  
 ¾"– 8" diameter – Product Number: 316535 – Gray

Quantity Per Box: 8

### PVC

#### Sizes Available:

¾"– 8" diameter – Product Number: 316537 – White  
 ¾"– 8" diameter – Product Number: 322959 – Gray  
 ¾"– 8" diameter – Product Number: 323823 – Tan

Quantity Per Box: 8

## SPLIT PIPE SEALS



Fabricated flashings made of 60-mil reinforced Sure-Weld and Sure-Flex membrane used for flashing pipes with an obstruction that prevents the use of a molded pipe seal. Other sizes and colors available through special order.

### TPO

#### Sizes Available:

1" – Product Number: 303504 – White  
 1" – Product Number: 307654 – Gray  
 1" – Product Number: 307648 – Tan  
 2" – Product Number: 303505 – White  
 2" – Product Number: 307655 – Gray  
 2" – Product Number: 307649 – Tan  
 3" – Product Number: 303506 – White  
 3" – Product Number: 307656 – Gray  
 3" – Product Number: 307650 – Tan  
 4" – Product Number: 303507 – White  
 4" – Product Number: 307657 – Gray  
 4" – Product Number: 307651 – Tan  
 5" – Product Number: 303508 – White  
 5" – Product Number: 307658 – Gray  
 5" – Product Number: 307652 – Tan  
 6" – Product Number: 303509 – White  
 6" – Product Number: 307659 – Gray  
 6" – Product Number: 307653 – Tan

Quantity Per Box: 8

### PVC

#### Sizes Available:

1" – Product Number: 307724 – White  
 1" – Product Number: 307725 – Gray  
 1" – Product Number: 307726 – Tan  
 2" – Product Number: 307727 – White  
 2" – Product Number: 307728 – Gray  
 2" – Product Number: 307729 – Tan  
 3" – Product Number: 307730 – White  
 3" – Product Number: 307731 – Gray  
 3" – Product Number: 307732 – Tan  
 4" – Product Number: 307733 – White  
 4" – Product Number: 307734 – Gray  
 4" – Product Number: 307735 – Tan  
 5" – Product Number: 307736 – White  
 5" – Product Number: 307737 – Gray  
 6" – Product Number: 307739 – White  
 6" – Product Number: 307740 – Gray

Quantity Per Box: 8

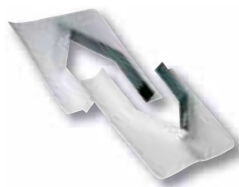


# Thermoplastic Accessories

**Sure-Weld TPO**  
Roofing Systems

**Sure-Flex PVC**  
Roofing Systems

## TPO PREFABRICATED SEALANT POCKETS



Reinforced TPO membrane laminated to TPO-coated metal. This pocket is designed to waterproof large penetrations such as I-beams and clusters of pipes. Other sizes are available through special order.

**Sizes Available:**  
Custom sizes only

**Quantity Per Box:** 2 complete pockets

## MOLDED SEALANT POCKETS



Interlocking, two-piece, injection-molded and weldable pockets used to waterproof pipe clusters or other oddly shaped penetrations.

### TPO

**Sizes Available:**

6" wide x 2" high  
Can be adjusted from 7½" to 11½" in length  
Product Number: 316539 – White  
Product Number: 316540 – Gray  
Product Number: 316541 – Tan

**Quantity Per Box:** 5 complete pockets

### PVC

**Sizes Available:**

6" wide x 2" high  
Can be adjusted from 7½" to 11½" in length  
Product Number: 316542 – White

**Quantity Per Box:** 5 complete pockets

## CURB WRAP CORNERS



Fabricated flashings made of 60-mil reinforced Sure-Weld membrane designed to reduce curb flashing time. Each corner has a 6"-wide base flange and a 12" overall height. One curb will require 4 corners. Other sizes and colors available through special orders. Can also be ordered in 1- or 2-piece wraps.

### TPO

**Sizes available:**

7" Wrap for 12" Curb –  
Product Number: 305062 – White  
13" Wrap for 24" Curb –  
Product Number: 305063 – White  
19" Wrap for 36" Curb –  
Product Number: 305064 – White

**Quantity Per Box:** 12 pieces or 3 complete curbs

### PVC

**Sizes Available:**

7" Wrap for 12" Curb –  
Product Number: 322973 – White  
Product Number: 322970 – Gray  
Product Number: 322977 – Tan  
13" Wrap for 24" Curb –  
Product Number: 322975 – White  
Product Number: 322971 – Gray  
Product Number: 322978 – Tan  
19" Wrap for 36" Curb –  
Product Number: 322976 – White  
Product Number: 322972 – Gray  
Product Number: 322979 – Tan

**Quantity Per Box:** 12 pieces or 3 complete curbs

## CONTOUR RIB™



This profile is extruded from the same weather-resistant TPO or PVC compound as the membrane. The Contour Rib Profile is secured to the TPO or PVC roofing membrane to simulate a standing seam metal roofing system. The physical dimensional stability of the profile is enhanced with fiberglass and the rectangular profile provides exceptional shadow lines for aesthetic appeal.

### TPO

**Sizes Available:**

10' – Product Number: 324572 – White  
10' – Product Number: 324573 – Gray  
10' – Product Number: 324574 – Tan

**Quantity Per Box:** 20

### PVC

**Sizes Available:**

10' – Product Number: 321909 – White  
10' – Product Number: 321911 – Gray  
10' – Product Number: 321910 – Tan

**Quantity Per Box:** 20

# Thermoplastic Accessories

## INSIDE/OUTSIDE CORNERS



Pre-molded and used for flashing inside and outside corners on a variety of details.

### TPO

#### Sizes Available: One Size

Product Number: 300020 – Gray – Outside  
 Product Number: 300025 – Tan – Outside  
 Product Number: 300016 – White – Outside  
 Product Number: 307406 – White – Inside  
 Product Number: 307407 – Tan – Inside  
 Product Number: 307408 – Gray – Inside

**Quantity Per Bag:** 12

### PVC

#### Sizes Available: One Size

Product Number: 307715 – White – Outside  
 Product Number: 307712 – White – Inside  
 Product Number: 323936 – Gray/Tan – Outside  
 Product Number: 323935 – Gray/Tan – Inside

**Quantity Per Bag:** 12

## T-JOINT COVERS



Injection-molded non-reinforced flashings used to seal T-Joint splice intersections.

### TPO

#### Sizes Available:

4½" diameter – Product Number: 307476 – White  
 4½" diameter – Product Number: 307478 – Gray  
 4½" diameter – Product Number: 307477 – Tan

**Quantity Per Box:** 100

### PVC

#### Sizes Available:

4½" diameter – Product Number: 308224 – White  
 4½" diameter – Product Number: 309494 – Gray  
 4½" diameter – Product Number: 309847 – Tan

**Quantity Per Box:** 100

## WALKWAY ROLLS AND PADS



Heat-weldable walkway rolls designed to protect Carlisle's TPO and PVC membranes in areas exposed to repetitive foot traffic and other hazards.

### TPO

#### Sizes Available:

34" x 50' – Product Number: 310508 – White  
 34" x 50' – Product Number: 310509 – Gray  
 34" x 50' – Product Number: 310510 – Tan

**Packaged Individually**



### PVC

#### Sizes Available:

36" x 60' – Product Number: 307711 – Gray

**Packaged Individually**

## COATED METAL



24-gauge (0.6 mm) galvanized steel sheet that is coated with a layer of .035" non-reinforced flashing. Membrane may be welded directly to the coated metal. The sheet is cut to the appropriate width and used to fabricate metal drip edges or other roof perimeter edging profiles.

### TPO

#### Sizes Available:

10 Pcs/Pallet –  
 4' x 10' – Product Number: 309272 – White  
 4' x 10' – Product Number: 309273 – Gray  
 4' x 10' – Product Number: 309274 – Tan

#### 25 Pcs/Pallet –

4' x 10' – Product Number: 303181 – White  
 4' x 10' – Product Number: 303183 – Gray  
 4' x 10' – Product Number: 303182 – Tan

### PVC

#### Sizes Available:

10 Pcs/Pallet –  
 4' x 10' – Product Number: 307708 – White  
 4' x 10' – Product Number: 307709 – Gray  
 4' x 10' – Product Number: 307710 – Tan

- Sure-Seal & Sure-White EPDM
- Sure-Weld TPO
- Sure-Flex PVC

# Fasteners & Plates



## HP FASTENER



Applicable to steel, 22-gauge and heavier, CDX plywood and wood plank deck types. Can be used to secure all EPDM membranes, RUSS and insulation. Longer fastener sizes available as special order.

### Sizes Available:

1 1/4", 2"– 15" (1" Increments)

### Size & Quantity Per Box:

2"– 6": 1,000; 7"– 12": 500; 13"– 15": 250  
1 1/4": 1000

## HP LIGHT DECK FASTENER



Applicable for Sure-Seal, Sure-Flex and Sure-Weld mechanically-fastened and fully-adhered roofing systems. Used in conjunction with a specially designed 3" Lite Deck Metal Plate for insulation attachment to gypsum, cementitious wood fiber (Tectum), and lightweight concrete decks. Features an oversize diameter (0.312" shank) and a deep coarse thread design for high pullout resistance.

### Sizes Available:

2 5/8", 3"– 10", 12" (1" Increments)

### Size & Quantity Per Box:

2 5/8"– 4": 500; 5"– 8": 250; 9", 10", 12": 125

## INSULFAST™ FASTENER



A #12 diameter fastener applicable to wood decks and steel, 22-gauge and heavier, decks. Used only for insulation attachment.

### Sizes Available:

2"– 8" (1" Increments)

1 5/8", 2 1/4", 3"– 8" (1" Increments)

### Size & Quantity Per Box:

2"– 8": 1,000

## HD 14-10 FASTENER



A #14 diameter fastener used for Sure-Tough, Sure-Weld and Sure-Flex membrane securement into wood and concrete decks. Also applicable to insulation securement into steel, wood and concrete decks.

### Sizes Available:

2"– 12" (1" Increments)

14"– 24" (2" Increments)

### Size & Quantity Per Box:

2"– 4": 1,000; 5"– 11": 500; 12"– 24": 250

## GYPTEC FASTENER & PLATE



Applicable to cementitious wood fiber, lightweight concrete and gypsum decks. Can be used to secure all EPDM, Sure-Weld and Sure-Flex membranes and insulation.

### Sizes Available:

2 1/2"– 10" (1/2" Increments)

### Size & Quantity Per Box:

2 1/2"– 7": 500; 7 1/2"– 10": 250

### GYPTEC PLATE

#### Sizes Available:

2" Metal membrane plate

3" Metal insulation plate

Quantity Per Box: 1,000

## CD-10 FASTENER



Applicable for concrete decks. Used to secure Sure-Seal, Sure-Weld and Sure-Flex membranes and for insulation securement.

### Sizes Available:

2"– 6" (1/2" Increments)

7"– 12" (1" Increments)

### Size & Quantity Per Box:

2"– 8": 500; 9"– 12": 250

# Fasteners & Plates

## ASAP INSULFAST FASTENER AND PLATE



A pre-assembled #12 diameter InsulFast fastener and plastic or metal insulation plate applicable to steel and wood decks. Used to secure insulation only. Longer fastener sizes available through special order.

**Sizes Available:**  
2¼", 3" – 8" (1" Increments)

**Size & Quantity Per Box:**  
2¼" – 8": 250; 10" – 12": 200

*Applications requiring a fastener larger than 8" should use fastener HD 14-10.*

## HP-X ASAP



A pre-assembled HP-X Fastener and Piranha Plate™ applicable to steel, wood and CDX plywood decks. Used to secure Sure-Weld and Sure-Flex membranes.

**Sizes Available:**  
2"–10" (1" Increments)  
12"–16" (2" Increments)

**Size & Quantity Per Box:**  
2" – 9": 250; 10" – 12": 200; 14" – 16": 150

## RETRODRILLER FASTENER



A specially designed fastener with a ½" drill point used for attaching Sure-Tough, Sure-Weld and Sure-Flex membranes to structural steel purlins (up to ¾") in standing seam metal roof retrofit applications.

**Sizes Available:**  
4", 5", 6", 8" & 10"

**Size & Quantity Per Box:**  
500

## HP-X FASTENER™ & HP-XTRA FASTENER



A #15 diameter fastener applicable to steel, wood and CDX plywood. Can be used to secure Sure-Seal, Sure-Weld and Sure-Flex membranes.

**Sizes Available:**  
2" – 8" (1" Increments)  
10" – 16" (2" Increments)

**Size & Quantity Per Box:**  
2" – 4": 1,000; 5" – 12": 500; 14" – 16": 250

### HP-XTRA FASTENER

*Also Available (Not shown)*

A #21 diameter fastener applicable to steel, wood and CDX plywood decks.

**Sizes Available:** 2" – 8" (1" increments) **Size & Quantity Per Box:** 500 (2" – 6"), 250 (7" – 8")

## POLYMER PRE-ASSEMBLED



Pre-assembled HP Fastener and Polymer seam plate applicable to steel, wood and CDX plywood decks. Used to secure Sure-Tough membranes.

**Sizes Available:**  
2" – 12" (1" Increments)

**Size & Quantity Per Box:**  
2": 500; 3": 450; 4", 5": 400; 6": 350;  
7", 8": 300; 9": 250; 10" – 12": 200

## OVAL BARBED PLATE



Along with the appropriate fastener (HP-X), used to secure Sure-Flex membranes to steel, concrete and wood decks.

**Sizes Available:**  
1½" x 2¾" Oval – Product Number: 319985

**Quantity Per Pail:** 500

- Sure-Seal & Sure-White EPDM
- Sure-Weld TPO
- Sure-Flex PVC

# Fasteners & Plates

## RHINO BOND® PLATE



3"-round, specially coated plates used with HP-X Fasteners and the RhinoBond induction welding system. Available in TPO and PVC versions.

**Sizes Available:**  
3" diameter

**Quantity Per Box:** 500

## HP POLYMER SEAM PLATE



Used in conjunction with the HP fastener. Required for EPDM membrane and RUSS attachment for mechanically fastened roofing systems over steel decks.

**Sizes Available:**  
2" diameter

**Quantity Per Box:** 1,000

### HP-XTRA POLYMER SEAM PLATE

*Also Available (Not shown)*

Used in conjunction with the HP-XTRA fastener. Provides greater pullout resistance than the 2" HP Polymer Seam Plate. Used to mechanically fasten Sure-Tough EPDM membranes over steel decks.

**Sizes Available:**  
2 3/8" diameter

**Quantity Per Box:** 1,000

## SEAM FASTENING PLATE



Can be used with the HP, HD 14-10 and CD-10 fasteners to mechanically attach all EPDM, Sure-Weld and Sure-Flex membranes and RUSS (excluding steel decks).

**Sizes Available:**  
2" diameter

**Quantity Per Box:** 1,000

## PIRANHA PLATE



Along with the appropriate fastener, used to secure Sure-Weld and Sure-Flex membranes to steel, concrete and wood decks.

**Sizes Available:**  
2 3/8" diameter

**Quantity Per Box:** 1,000

### HP-XTRA PIRANHA PLATE

*Also Available (Not shown)*

For use with HP-XTRA Fastener to secure Sure-Weld and Sure-Flex membranes to steel and wood decks.

**Sizes Available:**  
2 3/8" diameter

**Quantity Per Box:** 1,000

## INSULATION FASTENING PLATE



Applicable with InsulFast, HP, and CD-10 fasteners. Used for insulation securement only on steel, wood and concrete decks. Available in steel or plastic.

**Sizes Available:**  
3" diameter

**Quantity Per Box:** 1,000

## LIGHT DECK METAL PLATE



Along with the Light Deck Fastener, used in conjunction with a specially designed 3" Lite Deck Metal Plate for insulation attachment to gypsum, cementitious wood fiber (Tectum), and lightweight concrete decks.

**Sizes Available:**  
3" diameter

**Quantity Per Box:**  
500

# Fasteners & Plates

## TERMINATION BAR (ALUMINUM)



Extruded aluminum bar that is designed for securing and sealing compression type flashing terminations. The bar features a top edge for ease of applying Carlisle's Lap Sealant for EPDM installations or Universal Single Ply Sealant for TPO installations. The bar can be easily cut to any desired length.

**Sizes Available:**

1" wide x 10' long

**Quantity Per Box:** 50 pcs; 500 Linear Feet

## METAL FASTENING BAR



A Galvalume™ coated metal that is used to mechanically fasten EPDM membranes. The bar can be easily cut to any desired length and installed using using HP-X Fasteners.

**Sizes Available:**

1" wide x 10' long

**Size & Quantity Per Box:**

50 pcs; 500 Linear Feet

## TERM BAR NAIL-IN



Designed for use with Carlisle's Termination Bar or Seam Fastening Plates to secure membrane to concrete block, brick or structural concrete walls. A zinc plated steel pin is used to provide excellent corrosion resistance while the zinc alloy body provides excellent holding power.

**Sizes Available:**

1 1/4"

**Quantity Per Box:** 1,000

## PURLIN FASTENERS FOR METAL RETROFIT (MEMBRANE ATTACHMENT)



Specifically designed for use with Carlisle's Metal Retrofit Roofing System to secure membrane and RUSS™ to structural steel purlins. Are compatible with 2" HP Polymer Plates, providing superior backout resistance in standard 16 gauge Purlins.

**Sizes Available:**

3 3/4", 4 3/4", 5 3/4", 7", 8"

**Quantity Per Box:** 1,000

## ACCUTRAC PLATE (INSULATION)



AccuTrac Plates are a 3" Square Flat Bottom Plate made of Galvalume® coated steel. AccuTrac Steel Insulation Plates should be used when fastening insulation with the AccuTrac Tool.

**Sizes Available:**

3"

**Quantity Per Box:** 1,000

## SECURFAST™ INSULATION FASTENING PLATE



Specifically designed for coverboard securement under Sure-Seal, Sure-White, Sure-Flex or Sure-Weld Roofing Systems. Plates are stamped from Galvalume – coated steel for long-term protection against corrosion.

**Sizes Available:**

2 7/8"

**Quantity Per Box:** 1,000

- Sure-Seal & Sure-White EPDM
- Sure-Weld TPO
- FleeceBACK
- Sure-Flex PVC
- Multiple-Ply Systems
- Low VOC Product

# Adhesives & Sealants



## 90-8-30A EPDM BONDING ADHESIVE



**Packaging:** 5-gallon pail  
**Product Number:** 302124  
**Shelf Life:** 12 months

A high-strength, solvent-based contact adhesive that allows quick bonding of cured flashings and membranes to various substrates. It is a synthetic rubber adhesive formulated specifically for application with a 1/2" medium nap roller with enough versatility in the tack time to allow large areas to be coated and adhered at one time. 90-8-30A EPDM Bonding Adhesive is designed for bonding Sure-White, Sure-Seal, Sure-Tough and Epichlorohydrin membranes to approved substrates. 90-8-30A EPDM Bonding Adhesive is yellow in color.

**Coverage Rate:** 60 square feet per gallon of finished surface

## SURE-WELD TPO BONDING ADHESIVE



**Packaging:** 5-gallon pail  
**Product Number:** 302099  
**Shelf Life:** 12 months

A high-strength, solvent-based contact adhesive that allows bonding of Sure-Weld membrane to various porous and non-porous substrates. Sure-Weld Bonding Adhesive is yellow in color and should be stirred thoroughly until all settled pigments are dispersed and the adhesive is uniform in color.

**Coverage Rate:** 60 square feet per gallon of finished surface

## LOW-VOC BONDING ADHESIVE\*



**Packaging:** 5-gallon pail  
**Product Number:** 303090  
**Shelf Life:** 12 months

A high-strength, solvent-based contact adhesive that allows bonding of all EPDM and Sure-Weld TPO membrane to various porous and non-porous substrates. This product also meets the <250 gpl VOC content requirements of the OTC Model Rule for Single-Ply Roofing Adhesives. Mixing of adhesive is required.

**Coverage Rate:** 60 square feet per gallon of finished surface

## EPDM X-23 LOW-VOC BONDING ADHESIVE



**Packaging:** 5-gallon pail  
**Product Number:** 324002  
**Shelf Life:** 12 months

A high-strength, solvent-based contact adhesive that bonds EPDM membranes to various porous and non-porous substrates. This product meets the <250 gpl VOC content requirements of the OTC Model Rule for Single-Ply Roofing Adhesives. EPDM x-23 Low-VOC Bonding Adhesive is compatible with HP-H and SecurShield™ polyisocyanurate insulation, structural and lightweight insulating concrete, APA non-fire treated plywood, oriented strand board, wood fiberboard, SECURLOCK®, DensDeck® Prime, masonry, and various metal finishes. EPDM x-23 Low-VOC Bonding Adhesive is easily applied with a 9" (228 mm) medium nap roller, creating a strong adhesive bond between the membrane and substrate. Mixing of adhesive is required.

**Coverage Rate:** 60 square feet per gallon of finished surface

## LOW-VOC BONDING ADHESIVE 1168\*



**Packaging:** 5-gallon pail  
**Product Number:** 303090  
**Shelf Life:** 12 months

A high-strength, solvent-based contact adhesive that allows bonding of all EPDM and Sure-Weld TPO membrane to various porous and non-porous substrates. This product meets the requirements for SCAQMD regulations. Mixing of adhesive is required.

**Coverage Rate:** 60 square feet per gallon of finished surface

# Adhesives & Sealants

## AQUA BASE 120 BONDING ADHESIVE



A semi-pressure-sensitive water-based adhesive. This product may be used as a two-sided contact adhesive with EPDM and Sure-Weld TPO membranes or as a one-sided adhesive for FleeceBACK membranes. Aqua Base 120 is pink in color and dries translucent/yellow.

**Coverage Rate:** 120 square feet per gallon of finished surface. (May vary due to conditions such as insulation type or wall construction.)

**Packaging:** 5-gallon pail  
**Product Number:** 307431  
**Shelf Life:** 12 months

## SOLVENT-FREE EPDM BONDING ADHESIVE



A high-strength, low-odor, polymer-based adhesive that allows fast installation of EPDM membranes and cured flashings to various substrates. This adhesive is specially designed for installing Carlisle's Sure-Seal and Sure-White non-reinforced EPDM membranes.

**Coverage Rate:** 100 square feet per gallon of finished surface

**Packaging:** 5-gallon pail  
**Product Number:** 318127  
**Shelf Life:** 6 months

## HYDROBOND™ PVC WATER-BASED ADHESIVE



A water-based, wet lay-in, one-sided dispersion adhesive to be used with all Sure-Flex PVC smoothbacked and FleeceBACK membranes in adhered systems. It is specially formulated to be in compliance with the state of California Clean Air Act of 1988 (updated in 1997) and as further regulated by California's Air Quality Control District's listing of VOC limitations. This product also meets the requirements of the OTC Model Rule for Single-Ply Roofing Adhesives. HydroBond is ideal for bonding PVC membranes to various porous and non-porous substrates.

**Coverage Rate:**  
 Smooth-backed membrane:  
 Roller application – 100 square feet per gallon of finished surface  
 Spray application – 133 square feet per gallon of finished surface

FleeceBACK membrane:  
 Roller application – 100 square feet per gallon over polyiso, DensDeck, DensDeck Prime/ SECUROCK® and plywood  
 Spray application – 100 square feet per gallon over DensDeck and 133 square feet per gallon over polyiso, DensDeck Prime/SECUROCK and plywood

**Packaging:** 5-gallon pail  
**Product Number:** 322112  
**Shelf Life:** 12 months

## LOW-VOC PVC BONDING ADHESIVE



A high-strength, solvent-based contact adhesive that allows bonding of PVC and KEE-enhanced PVC membrane to various porous and non-porous substrates. It is specially formulated using a blend of VOC-exempt and nonexempt solvents. This product also meets the <250 gpl VOC content requirements of the OTC Model Rule for Single-Ply roofing adhesives. Mixing of adhesive is required.

**Coverage Rate:** 60 square feet per gallon of finished surface

**Packaging:** 5-gallon pail  
**Product Number:** 309126  
**Shelf Life:** 12 months

- Sure-Seal & Sure-White EPDM
- Sure-Weld TPO
- FleeceBACK
- Sure-Flex PVC
- Multiple-Ply Systems
- Low VOC Product

# Adhesives & Sealants

## FAST™ ADHESIVE



A low-rise, two-component, insulating polyurethane adhesive. It can be used to adhere a variety of insulations and Carlisle's FleeceBACK membranes, and is applied in full spray or beads.

**Coverage Rate:** See Product Data Sheet.

### Packaging:

50-gallon drum – Part A – Product Number: 304003

50-gallon drum – Part B – Product Number: 304004

15-gallon drum – Part A – Product Number: 304001

15-gallon drum – Part B – Product Number: 304002

Bag-in-a-Box – Part A – Product Number: 317332 – Also available (not shown)

Bag-in-a-Box – Part B – Product Number: 317333 – Also available (not shown)

**Static Mixing Tip:** 305573

Dual Cartridge – Product Number: 310150

Dual Cartridge IC (Winter Grade) – Product Number: 310513

**Shelf Life:** 12 months (Part A and Part B)

## FLEXIBLE FAST ADHESIVE



A high-strength, solvent-based contact adhesive that bonds EPDM membranes to various porous and non-porous substrates. This product meets the <250 gpl VOC content requirements of the OTC Model Rule for Single-Ply Roofing Adhesives. EPDM x-23 Low-VOC Bonding Adhesive is compatible with HP-H and SecurShield™ polyisocyanurate insulation, structural and lightweight concrete, plywood, oriented strand board, wood fiberboard, SECUROCK®, DensDeck® Prime, masonry, and various metal finishes. Mixing of adhesive is required.

**Coverage Rate:** See Product Data Sheet.

### Packaging:

50-gallon drums – Part A – Product Number: 310472

50-gallon drums – Part B – Product Number: 310473

15-gallon drums – Part A – Product Number: 317329

15-gallon drums – Part B – Product Number: 317331

Dual Cartridge – Product Number: 322958

**Shelf Life:** 12 months (Part A and Part B)

## TPO PRIMER



A high-solids, clear polymer-based primer used to prepare TPO membrane prior to the application of TPO pressure-sensitive products.

**Coverage Rate:** 200 – 250 square feet (one surface) per gallon.

**Packaging:** (6) 1-gallon cans

**Product Number:** 310471

**Shelf Life:** 12 months unopened can

## COLD APPLIED ADHESIVE



An asphalt-modified polyether, one-sided, wet lay-in adhesive designed to adhere to FleeceBACK AFX membranes and Carlisle's modified base sheet.

**Coverage Rate:** 67 square feet per gallon of finished surface for smooth surfaces. 50 square feet per gallon of finished surface for uneven surfaces.

**Packaging:** 5-gallon pail

**Product Number:** 319689

**Shelf Life:** 9 months when stored below 90°F

## LOW-VOC PRIMER



Designed for one-step priming of EPDM and TPO surfaces prior to the application of pressure-sensitive products. It is a Low-VOC product that is ideal for use where environmental issues are a concern.

**Coverage Rate:** As high as 700 square feet per gallon with TPO or Kleen EPDM membrane.

Approx. 250 square feet per gallon with dusted EPDM membrane.

**Packaging:** (6) 1-gallon cans

**Product Number:** 316522

**Shelf Life:** 9 months

## HP-250 EPDM PRIMER



A solvent-based product designed for priming of Carlisle's EPDM membrane prior to the application of PS SecurTAPE, FAT™ and all other PS products.

**Coverage Rate:** As high as 450 square feet per gallon with Kleen EPDM membrane. Approx. 250 square feet per gallon with standard membrane.

**Packaging:** (6) 1-gallon cans

**Product Number:** 302070

**Shelf Life:** 9 months

# Adhesives & Sealants

## CAV-GRIP™



CAV-GRIP is a multi-purpose contact adhesive/primer recommended for enhancing the bond of Carlisle's 725TR Air and Vapor Barrier. CAV-GRIP can also be used as a primer for unexposed asphalt.

**Coverage Rate:** 50-55 square feet per lb, 2,000-2,500 square feet per cylinder for 725TR or priming unexposed asphalt.

**Packaging:** 40-lb aerosol cylinder

**Product Number:** 305432

**Shelf Life:** 12 months unopened container

## CCW-702 PRIMER



CCW-702 is a solvent-based, high-tack adhesives specifically designed to promote maximum adhesion of Carlisle 725TR Air and Vapor Barrier to approved substrates. It is also used as a surface prep to promote adhesion with FAST Adhesive.

**Coverage Rate:** 300-350 square feet per gallon.

**Packaging:**

5-gallon pails

**Product Number:** 305363

**Shelf Life:** 12 months unopened container

## WEATHERED MEMBRANE CLEANER



Carlisle's Weathered Membrane Cleaner is used to clean both new and in-service Sure-Seal EPDM membrane and Sure-Weld TPO membrane prior to the welding process. It helps to loosen and remove dirt and other contaminants from the surface of the membranes and leaves a suitable surface for application of adhesive or primer. Please refer to the Product Data Sheets for specific instructions for EPDM and TPO applications. Membrane cleaner is clear in color.

**Coverage Rate:** 400 square feet (one surface) per gallon.

**Packaging:**

(2) 1-gallon closed-top cans,  
5-gallon closed-top pail

1-gallon cans

**Product Number:** 304066

5-gallon pail

**Product Number:** 302074

## CCW-702LV PRIMER



CCW-702LV is a solvent-based, high-tack adhesives specifically designed to promote maximum adhesion of Carlisle 725TR Air and Vapor Barrier to approved substrates. It is also used as a surface prep to promote adhesion with FAST Adhesive.

**Coverage Rate:** 300-350 square feet per gallon.

**Packaging:**

5-gallon pails

**Product Number:** 316148

**Shelf Life:** 12 months unopened container

## PVC MEMBRANE CLEANER



This cleaner is specially formulated to clean both new and in-service Sure-Flex membrane.

**Coverage Rate:** 400 square feet (one surface) per gallon.

**Packaging:**

5-gallon closed-top pail

**Product Number:** 308352

- Sure-Seal & Sure-White EPDM
- Sure-Weld TPO
- FleeceBACK
- Sure-Flex PVC
- Multiple-Ply Systems
- Low VOC Product

# Adhesives & Sealants

## WATER CUT-OFF MASTIC



A one-component, low-viscosity, self-wetting, butyl-blend mastic designed to be used in conjunction with roofing and waterproofing systems. It is primarily used as a sealing agent between various membranes and applicable when membrane is being terminated using a compression-type seal. Water Cut-Off Mastic is an extremely tacky material and will remain as such when used with compression type terminations. Mastic is gray in color.

**Packaging:** 25 Tubes/carton

**Product Number:** 319621

**Shelf Life:** 12 months  
unopened container

**Coverage Rate:** 10' per tube, using a 7/16" bead.

## CUT EDGE SEALANT



**Packaging:** (8) 16-oz.  
Bottles/carton

**Product Number:**  
303436 – Clear

**Shelf Life:** 12 months

### TPO CUT EDGE SEALANT

A free-flowing polymeric material designed for sealing cut edges (exposed fabric) of Sure-Weld TPO membrane. Cut Edge Sealant is clear in color.

**Coverage Rate:** 225'-275' per 16-oz. bottle when applied with 1/8" bead.

### PVC CUT EDGE SEALANT

*Also Available (Not shown)*

PVC Cut Edge Sealant is recommended for sealing cut edges (exposed fabric) of Sure-Flex PVC Membrane. Cut Edge Sealant is clear in color.

**Packaging:** (12) 16-oz.  
Bottles/carton

**Product Number:** 307754

**Shelf life:** 12 months

**Coverage Rate:** 225'-275' per bottle when applied with 1/8" bead.



## SURE-SEAL AND SURE-WHITE LAP SEALANTS



The consistency enables it to expand and contract with membrane movement without loss of adhesion. Lap Sealants may be used to seal mechanical terminations, the cut edges of Sure-Tough EPDM membranes and for sealing at splice intersections. Lap Sealant must be applied and feathered on all seam edges by the end of the working day.

**Coverage Rate:** 22' per tube using a 5/16" bead.

**Packaging:** 25 Tubes/carton

**Product Number:**

302174 – Black

302172 – White

**Shelf Life:** 12 months

## UNIVERSAL SINGLE-PLY SEALANT



A 100%-solids, solvent-free, one-part, polyether sealant that provides a weathertight seal to a variety of building substrates. Universal Single-Ply Sealant can be used as a termination bar sealant for Sure-Weld, Sure-Flex and Sure-Seal white adhered and mechanically fastened roofing systems. It is also an excellent product for use in counter flashing, coping and scupper details. Universal Single-Ply Sealant has excellent adhesion to substrates such as stone, masonry, ceramic, marble, wood, steel, aluminum, Kynar®-coated metal, most plastics and composites. Universal Single-Ply Sealant is not recommended as a glass glazing sealant.

**Coverage Rate:** 25' per tube or 600' per carton using a 1/4" bead.

**Packaging:** 25 Tubes/carton

**Product Number:** 310131

**Shelf Life:** 12 months  
unopened container  
(@ <90°F)

\*\* Certain restrictions apply, see Product Data Sheet.

# Adhesives & Sealants

## ONE-PART POURABLE SEALER



**Packaging:** (4) 1/2-gallon pouches per bucket

**Product Number:**  
307647 – Black  
307603 – White

**Shelf Life:** 12 months unopened container

A single-component, moisture-curing, elastomeric polyether sealant that is compatible with Carlisle's EPDM, TPO and PVC membranes. It is designed to provide a flexible, durable and long-lasting seal around hard-to-flash penetrations. The sealant's consistency allows for quick pocket filling without mixing. Unused sealant is usable for up to 30 days if pouch is resealed with original cap. Sure-Seal one-part pourable sealer is black in color. One-part pourable sealer is white in color.

**Coverage Rate:** 122 cubic inches of volume per 1/2-gallon pouch.

## SURE-SEAL TWO-PART POURABLE SEALER



**Packaging:**

Part A – (2) 1-gallon pails/ctn.  
Part B – (2) 1-pint cans/ctn.

**Product Number:**  
302084

**Shelf Life:** 12 months unopened container

A two-component, solvent-free, polyurethane-based product compatible with Carlisle's Sure-Seal and Sure-White™ membranes. It is designed to provide a flexible, durable and long-lasting seal around hard-to-flash penetrations in Sure-Seal and Sure-White Roofing Systems. The product can also be used to provide a permanent tie-in between the Sure-Seal and Sure-White membranes and a built-up roof surface and for attaching lightning rod bases and ground cable clips to the membrane surface.

**Coverage Rate:** 2313 cubic inches of volume per properly mixed 1-gallon

## SPLICE CEMENT



**Packaging:** (6) 1-gallon cans – Black and White

**Product Number:**  
302342 – Black  
302147 – White

**Shelf Life:**  
12 months – Black  
9 months – White

Designed for splicing cured-to-cured EPDM and butyl membranes as well as non-PS EPDM uncured flashing. Splicing adhesives are high-strength, solvent-based contact cements which allow quick bonding of flashing, sheeting and cured rubber seams. They are synthetic rubber adhesives formulated specifically for application with a 1/2" medium nap roller and/or a 1/2"-thick paint brush with enough versatility in the tack time of the film to allow large areas to be coated and adhered at one time.

**Coverage Rate:** 100 square feet per gallon.

*This product is for use on non-warranted projects only.*

# Insulation Reference



## HP-H POLYISO

A rigid roof insulation panel composed of closed-cell polyisocyanurate foam core bonded to fiber-reinforced facers. Approved by UL and FM for direct application over steel decks, polyiso provides the highest R-value per inch of any commercially available insulation product.

**Sizes:** 4' x 4' and 4' x 8'

**Thickness:** 1" to 4 1/2"

**Compressive Strength:** 20 and 25psi



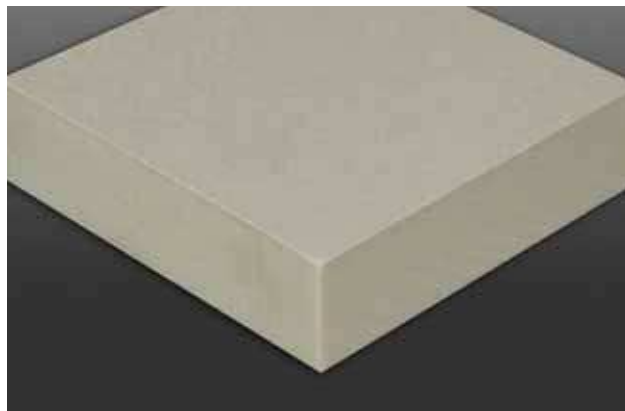
## SECURSHIELD™

A rigid roof insulation panel composed of a closed-cell polyisocyanurate foam core bonded to high performance coated glass facers. The premium facer provides improved fire and moisture resistance, enhanced wind uplift performance and improved dimensional stability. Ideal for use in fully adhered systems and achieves a UL Class A fire rating at 3" on combustible decks.

**Sizes:** 4' x 4' and 4' x 8'

**Thickness:** 1" to 4 1/2"

**Compressive Strength:** 20 and 25psi



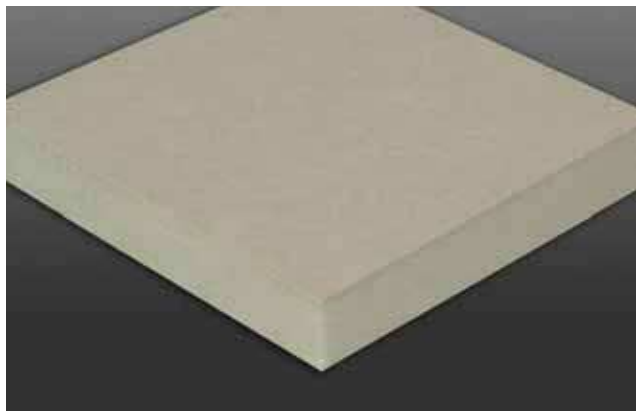
## SECURSHIELD CD

A rigid roof insulation panel composed of a closed-cell polyisocyanurate foam core bonded to enhanced high performance coated glass facers providing a UL Class A fire rating at only 1" on combustible decks.

**Sizes:** 4' x 4' and 4' x 8'

**Thickness:** 1"

**Compressive Strength:** 20 and 25psi



## HP-NB POLYISO

A rigid roof insulation composite panel composed of closed-cell polyisocyanurate foam core bonded to a fiber-reinforced facer on one side and either 7/16" or 5/8" oriented strand board (OSB) on the other. 5/8" and 3/4" plywood, as well as FSC Certified OSB and plywood options are also available.

**Sizes:** 4' x 8'

**Thickness:** 1" to 4 1/2"



# Insulation Reference

## TAPERED POLYISO

A sloped rigid roof insulation panel composed of closed cell polyisocyanurate foam core bonded to either high performance coated glass or fiber-reinforced facers. Designed to promote positive drainage and prevent ponding water with design assistance available through Carlisle's Tapered Design Team.

**Sizes:** 4' x 4' and 4' x 8'

**Thickness:** ½" to 4 ½" (multiple layers utilized for increased thicknesses)

**Compressive Strength:** 20 and 25psi



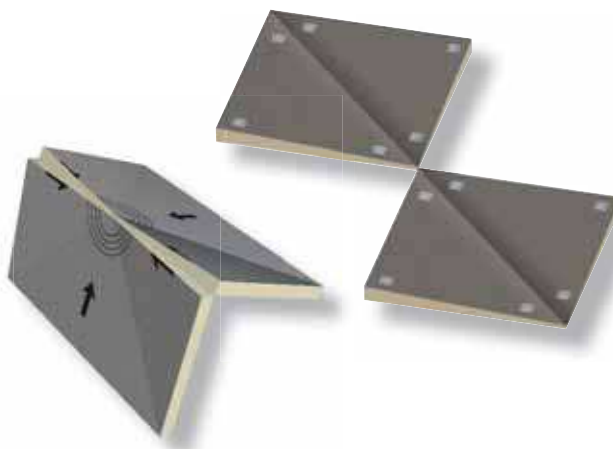
## TAPERED ACCESSORIES

Hinged Target Sumps and Pre-Cut Hips and Valleys ship ready to install, require no field cuts and save valuable time on the roof. Multiple thicknesses and slopes available to accommodate specific job conditions with no waste, thus reducing disposal fees.

**Sizes:** 4' x 4' (Hip/Valley) and 8' x 8' (Sump)

**Thickness:** As required by job

**Compressive Strength:** As required by job



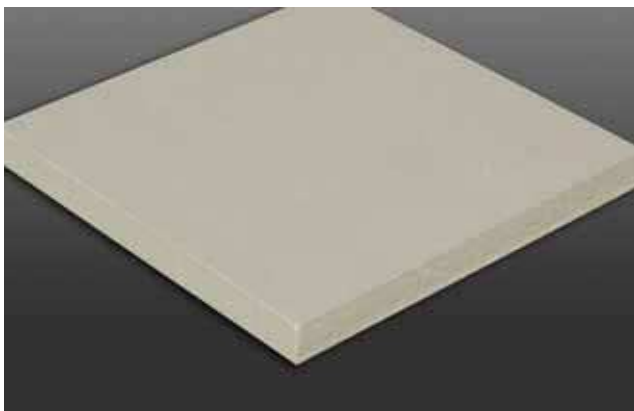
## SECURSHIELD HD AND HD PLUS

A rigid roof insulation panel composed of ½" high-density, closed-cell polyisocyanurate foam core bonded to a premium performance coated glass facer specifically designed for use as a cover board. Provides 5 times the R-value at 5 times less weight than traditional gypsum cover boards. Enhanced performance of the HD Plus product provides a FM 1-90 wind uplift rating with only 8 fasteners.

**Sizes:** 4' x 8'

**Thickness:** ½"

**Compressive Strength:** 100psi (HD) and >100psi (HD Plus)



## SECURSHIELD HD COMPOSITE

A unique composite insulation panel comprised of ½" high-density 100psi polyiso cover board bonded during the manufacturing process to SecurShield rigid Polyiso roof insulation. Eliminates the need for cover boards, reduces inter-ply adhesives and saves labor on the roof. Achieves a UL Class A fire rating at 2" on combustible decks.

**Sizes:** 4' x 4' and 4' x 8'

**Thickness:** 2" to 4 ½"

**Compressive Strength:** 20 or 25psi (SecurShield)  
and 100psi (Securshield HD)



# Insulation Reference

## CARLISLE EPS

Engineered rigid insulation consisting of high-performance, water-resistant expanded polystyrene (EPS). Meets ASTM C578 requirements, includes extensive UL and FM ratings and can be applied direct to the metal deck. Warranted long-term R-value of up to 5.05/inch @40°F.

**Sizes:** 4' x 4' or 4' x 8'; custom sizes available

**Thickness:** ¼" to 40" per panel

**Densities:** 1 to 3 lb/ft<sup>3</sup>



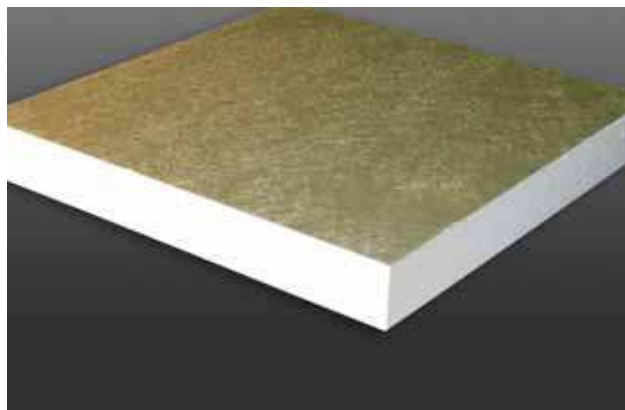
## CARLISLE SP EPS

Premium coated glass-faced insulation approved for mechanically-attached or self-adhering systems without a slip sheet. Warranted long-term R-value providing up to R30 in a single layer.

**Sizes:** 4' x 4' or 4' x 8'; custom sizes and taper panels available

**Thickness:** ¼" to 6"

**Densities:** 1.25 to 3 lb/ft<sup>3</sup>



## CARLISLE EPS (40/60 PSI)

High compressive-strength engineered EPS. Ideal for plaza decks, garden or vegetative roofs, IRMA and high traffic areas that require additional strength and water-resistance. Available in thicknesses up to 40" in a single layer.

**Sizes:** 4' x 4' or 4' x 8'; custom sizes and taper panels available

**Thickness:** ¼" to 40" per panel

**Compressive Strength:** 40 and 60 psi



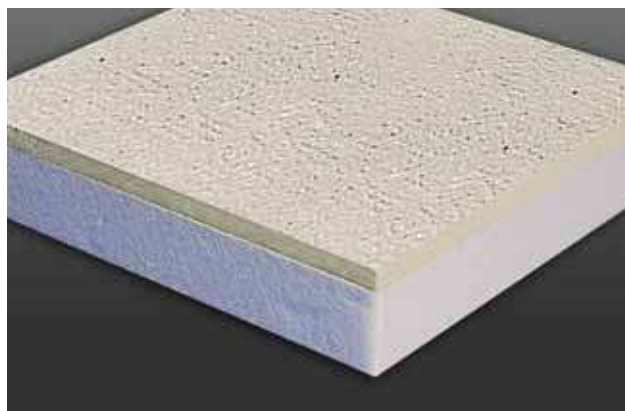
## CARLISLE HD EPS COMPOSITE

High-density polyiso cover board (½") laminated to Carlisle engineered EPS. 5x times lighter than traditional cover boards and approved for both adhered and mechanically attached systems, while providing enhanced protection against severe weather and hail. Meets Title 24 requirements for continuous insulation on combustible decks.

**Sizes:** 4' x 4' or 4' x 8'; custom sizes and taper panels available

**Thickness:** 1 ½" to 7" (including ½" HD Polysio cover board)

**Densities:** 1 to 3 lb/ft<sup>3</sup>



# Insulation Reference

## CARLISLE EPS TAPER

Tapered engineered EPS insulation available in virtually any slope, with panels up to 40" in a single layer. Can be combined with Carlisle polyiso for tapered hybrid roof systems. Design assistance available through Carlisle's Tapered Design Team. Custom saddles and crickets also available.

**Slope:** Virtually any slope

**Thickness:** ½" to 40"

**Densities:** 1 to 3 lb/ft³



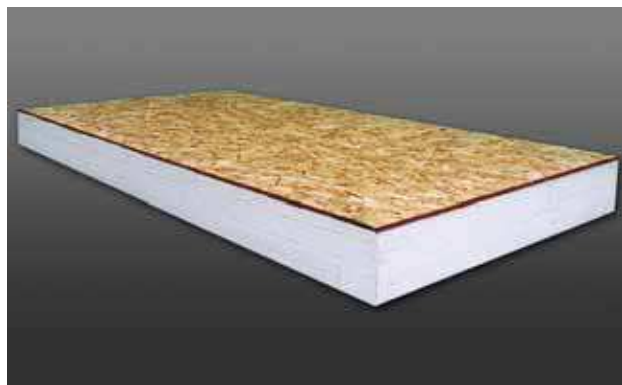
## CARLISLE INSULLAM

OSB, Plywood or Gypsum board laminated to Carlisle engineered EPS. Approved for both adhered and mechanically attached systems, providing enhanced protection against severe weather and hail. Can be utilized as a nail base, is available vented and with a wide assortment of cover boards.

**Sizes:** 4' x 4' or 4' x 8'

**Thickness:** 1" to 6"

**Laminate:** OSB 7/16" and 5/8"; Plywood 5/8"; Gyp thickness varies



## R-TECH® FANFOLD RECOVER

High performance water-resistant facers laminated to Carlisle engineered EPS. Code-approved for recover applications and compatible with both light and dark colored single-ply membranes. 5x times lighter than traditional cover boards with a coverage rate of 200 sq. ft., saving time and labor on the roof.

**Sizes:** 2' x 4' (folded), 4' x 50' (unfolded)

**Thickness:** 3/8", 1/2", 3/4"



## CARLISLE EPS FLUTE-FILL

Custom cut, engineered EPS flute-fill insulation manufactured for virtually any standing seam profile. Meets ASTM C578 requirements and includes extensive UL and FM ratings, including installations direct to metal deck.

**Thickness, Shape and Size:** Custom manufactured to fit any roof profile



# EPDM SYSTEMS

	BALLASTED	ADHERED	MECHANICALLY FASTENED	FLEECEBACK	AFX	COVERAGE RATE OR AVAILABLE SIZES	PACKAGING
<b>MEMBRANES</b>							
Sure-Seal Non-Reinforced 60- & 90-mil EPDM	✓	✓		✓	✓		4½' x 50'-50' x 200' per roll
Sure-White Non-Reinforced 60- and 90-mil White EPDM		✓		✓	✓		10'-30' x 100' per roll
Sure-Tough Reinforced 60- & 75-mil EPDM	✓	✓	✓				4½'-10' x 50-100' per roll
<b>ADHESIVES &amp; SEALANTS</b>							
Low-VOC Primer	✓	✓	✓	✓	✓	400 sq. ft. per gallon (dusty membrane) Up to 700 sq. ft. per gallon (no-dust membrane)	(6) 1 gallon cans per case
HP-250 Primer	✓	✓	✓	✓	✓	250 sq. ft. per gallon (dusty membrane) Up to 450 sq. ft. per gallon (no-dust membrane)	(6) 1 gallon cans per case
90-8-30A EPDM Bonding Adhesive		✓				60 sq. ft. per gallon	5 gallon pail
Solvent-Free EPDM Bonding Adhesive		✓ (non-reinforced only)				100 sq. ft. per gallon	5 gallon pail
Flexible FAST Adhesive				✓			
Aqua Base 120 Bonding Adhesive		✓		✓		100-120 sq. ft. per gallon	5 gallon pail
Cold Applied Adhesive					✓	67 sq. ft. per gallon	5 gallon pail
Low-VOC Bonding Adhesive		✓				60 sq. ft. per gallon	5 gallon pail
Sure-Seal Black Lap Sealant	✓	✓	✓	✓	✓	22' per tube	25 tubes per carton
Sure-White White Lap Sealant	✓	✓	✓	✓	✓	22' per tube	25 tubes per carton
One-Part Pourable Sealer (Black/White)	✓	✓	✓	✓	✓	488 cubic inches per gallon	(4) ½ gallon pouches/bucket
FAST Dual Cartridge Adhesive				✓		600 sq. ft. (12" O.C.), 300 sq. ft. (6" O.C.), 200 (4" O.C.)	4 sets per carton
Weathered Membrane Cleaner	✓	✓	✓	✓	✓	400 sq. ft. per gallon	(2) 1 gallon cans or (1) 5 gallon pail
Water Cut Off Mastic	✓	✓	✓	✓	✓	10' per tube	25 tubes per carton
Pressure-Sensitive SecurTAPE	✓	✓	✓	✓	✓	3" x 100', 6" x 100'	3" – 4 rolls per carton, 6" – 2 rolls per carton

# EPDM SYSTEMS

	BALLASTED	ADHERED	MECHANICALLY FASTENED	FLEECEBACK	AFX	COVERAGE RATE OR AVAILABLE SIZES	PACKAGING
<b>FLASHINGS</b>							
Pressure-Sensitive Elastoform EPDM Flashing (Black/White)	✓	✓	✓	✓	✓	6" x 100', 9" & 12" x 50"	6" - 2 rolls per carton 9" & 12" - 1 roll per carton
Pressure-Sensitive Cured Coverstrip (Black/White)	✓	✓	✓	✓	✓	6" x 100', 9" x 100' & 12" x 50'	6" - 2 rolls per carton 9" & 12" - 1 roll per carton
Pressure-Sensitive Overlayment Strip (Black)	✓	✓	✓	✓	✓	6" x 100', 9" x 100' & 12" x 50'	6" - 2 rolls per carton 9" & 12" - 1 roll per carton
Pressure-Sensitive RUSS (Black/White)	✓	✓	✓			6", 9" x 100'	6" - 2 rolls per carton 9" - 1 roll per carton
Pressure-Sensitive Pipe Seals (Black/White)	✓	✓	✓	✓	✓	½" - 3" & 1" - 6" pipes	10 per carton
Pressure-Sensitive Pourable Sealer Pockets (Black/White)	✓	✓	✓	✓	✓	Black - 4", 6", 8" White - 6" only	12 per carton
Pressure-Sensitive Inside/Outside Corners (Black/White)	✓	✓	✓	✓	✓	7" x 9"	20 per carton
Pressure-Sensitive Curb Flashing (Black/White)	✓	✓	✓	✓	✓	20" x 50', with 6" tape	1 roll per carton
Fully Pressure-Sensitive Curb Flashing (Black)	✓	✓	✓	✓	✓	20" x 50'	1 roll per carton
Pressure-Sensitive T-Joint Covers (Black)	✓	✓	✓	✓	✓	6" & 12"	20 per carton
Pipe Supports	✓	✓	✓	✓	✓	Mini: ½" - 1 ½" Small: ¾" - 2" Large: 2 ½" - 5"	Mini & small 20 per carton; large 10 per carton

	BALLASTED	ADHERED	MECHANICALLY FASTENED	FLEECEBACK	AFX	COVERAGE RATE OR AVAILABLE SIZES	PACKAGING
<b>ACCESSORIES</b>							
Pressure-Sensitive Molded Walkway Pads (Black/White)	✓	✓	✓	✓	✓	30" x 30"	50/pallet
Interlocking Rubber Pavers (Black/TerraCotta)	✓	✓	✓	✓	✓	24" x 24"	Single paver
HP Protective Mat	✓					15' x 300'	Per roll
EPDM Expansion Joint-Edge	✓	✓	✓	✓	✓	25 ft.	25 LF per carton
EPDM Expansion Joint-Field	✓	✓	✓	✓	✓	25 ft.	25 LF per carton

## SURE-WELD TPO SYSTEMS

	MECHANICALLY FASTENED	ADHERED	FLEECEBACK	AFX	COVERAGE RATE OR AVAILABLE SIZES	PACKAGING
<b>TPO MEMBRANES</b>						
Sure-Weld 45-, 60- & 80-mil	✓	✓	✓	✓		4' to 12' x 100' roll
<b>TPO ADHESIVES AND SEALANTS</b>						
Sure-Weld Bonding Adhesive		✓			60 sq. ft. per gallon	5 gallon pail
Aqua Base 120 Bonding Adhesive		✓	✓		100-120 sq. ft. per gallon	5 gallon pail
FAST Adhesive			✓		See PDS	Multiple
Low-VOC Bonding Adhesive		✓			60 sq. ft. per gallon	5 gallon pail
Flexible FAST Adhesive			✓		See PDS	Multiple
Weathered Membrane Cleaner	✓	✓	✓	✓	400 sq. ft. per gallon	1 gallon or 5 gallon pail
Cold Applied Adhesive				✓	50-67 sq. ft. per gallon	5 gallon pail
White One-Part Sealant	✓	✓	✓	✓	122 cubic inches per .5 gallon	(4) 0.5 gallon pouches/bucket
TPO Primer (Standard and Low-VOC)	✓	✓	✓	✓	200 to 250 sq. ft. per gallon	(6) 1 gallon cans/carton
TPO Clear Cut Edge Sealant	✓	✓	✓	✓	225 linear ft. per bottle	6 bottles per carton
Universal Single-Ply Sealant	✓	✓	✓	✓	25 ft. per tube (½" bead)	24 tubes, 10.1 fl. oz. each
<b>TPO FLASHINGS</b>						
TPO Molded Pipe Seals (White/Gray/Tan)	✓	✓	✓	✓	¾" to 8"	8 per carton
TPO PS Coverstrip 6" x 100' (White/Gray/Tan)	✓	✓	✓	✓	6" x 100'	2 rolls per carton
TPO Non-Reinforced Flashing (White/Gray/Tan)	✓	✓	✓	✓	12" x 50' & 24" x 50'	1 per carton
TPO Split Pipe Seals (White)	✓	✓	✓	✓	1" to 6"	8 per box
TPO Square Tubing Wraps (White)	✓	✓	✓	✓	3", 4", 5", 6"	8 per box
TPO Inside Corners (White/Gray/Tan)	✓	✓	✓	✓		12 per bag
TPO Outside Corners (White/Gray/Tan)	✓	✓	✓	✓		12 per bag
TPO Curb Wrap Corners (White)	✓	✓	✓	✓	7", 13", 19"	12 per box
TPO Molded Sealant Pockets (White/Gray/Tan)	✓	✓	✓	✓	7.5" to 11" x 6" oval	5 per carton
TPO Sealant Pocket Extensions (White)	✓	✓	✓	✓	14" overall length; 10" installed length	10 per carton
6" TPO PS RUSS	✓	✓			6" x 100'	2 rolls
10" TPO PS RUSS	✓				10" x 100'	1 roll
TPO T-Joint Covers (White/Gray/Tan)	✓	✓	✓	✓	4.5" diameter	100 per box
<b>ACCESSORIES</b>						
TPO Walkway Rolls (White/Gray/Tan)	✓	✓	✓	✓	34" x 50' roll	Per roll
TPO Coated Metal 4' x 10' (White/Gray/Tan)	✓	✓	✓	✓	4' x 10'	10 or 25 per skid

# SURE-WELD TPO SYSTEMS

	MECHANICALLY FASTENED	ADHERED	FLEECEBACK	AFX	COVERAGE RATE OR AVAILABLE SIZES	PACKAGING
<b>TPO OR PVC FASTENERS</b>						
Insulfast Insulation Fasteners	✓	✓	✓	✓	1 5/8" to 8"	1000 per package
3" Steel Insulation Plate	✓	✓	✓	✓	3" diameter	1000 per package
HP Fasteners (Insulation)		✓	✓		1 1/4" to 15"	500-1000 per package
HP-X Fasteners (Membrane)	✓				2" to 22"	500-1000 per package
HP-X ASAP Fasteners (Membrane)	✓				2" to 16"	150 to 250 per package
Piranha Plates	✓				2 3/8"	1000 per package
HP-XTRA Fasteners (Steel Deck Only)	✓				2" to 12"	250-500 per bucket
TPO RhinoBond Plates	✓				3" diameter	500 per package
PVC RhinoBond Plates	✓				3" diameter	500 per package

# SURE-FLEX PVC SYSTEMS

	MECHANICALLY FASTENED	ADHERED	FLEECEBACK	COVERAGE RATE OR AVAILABLE SIZES	PACKAGING
<b>PVC MEMBRANES</b>					
Sure-Flex 50, 60 & 80 mil	✓	✓	✓*		See PDS
Sure-Flex PVC KEE 50, 60 & 80-mil	✓	✓	✓		See PDS
<b>PVC FLASHINGS</b>					
PVC Curb Wrap Corners (White/Gray/Tan)	✓	✓	✓	7", 13", 19"	12 per box
PVC/KEE Coverstrip (White)	✓	✓	✓	8" x 65', 8" x 80'	60-mil – 2 rolls per carton 80-mil – 1 roll per carton
PVC Flashing (White/Gray and White/Tan)	✓	✓	✓	12", 24" x 50'	1 per carton
PVC T-Joint Covers (White/Gray/Tan)	✓	✓	✓	4.5" diameter	100 per box
PVC Inside Corners (White/Gray/Tan)	✓	✓	✓		12 per bag
PVC Outside Corners (White/Gray/Tan)	✓	✓	✓		12 per bag
PVC Molded Sealant Pockets (White)	✓	✓	✓	7 1/2" x 6"	5 per carton
PVC Molded Pipe Seals (White/Gray)	✓	✓	✓	3/4" to 8" diameter pipe	8 per box
PVC Split Pipe Seals (White/Gray/Tan)	✓	✓	✓	1" to 6" diameter pipe	8 per box
PVC Square Tubing Wraps (White/Gray/Tan)	✓	✓	✓	3", 4", 6"	8 per box
<b>PVC ADHESIVES AND SEALANTS</b>					
Low-VOC PVC Bonding Adhesive		✓		60 sq. ft. per gallon	5 gallon pail
HydroBond PVC Water-Based Adhesive		✓	✓	100 and 135 sq. ft. per gallon	5 gallon pail
FAST Adhesive			✓	See PDS	See PDS
Flexible FAST Adhesive			✓	See PDS	See PDS
White One-Part Sealant	✓	✓	✓	122 cubic inches per .5 gallon	(4) 0.5 gallon pouches/bucket
PVC Cut-Edge Sealant	✓	✓	✓	225' to 275' (1/8" bead)	(12) 16 oz. bottles/carton
PVC Membrane Cleaner	✓	✓	✓	400 sq. ft. per gallon	5 gallon pail
<b>PVC COATED METAL &amp; WALKWAY</b>					
White PVC Coated Metal	✓	✓	✓	4' x 10' sheet	10 sheet/pallet
PVC Walkway Rolls (Gray)	✓	✓	✓	36" x 60' (91.4 cm x 18.3 m)	Per roll

\*Available in 60- and 80-mil only



**800-479-6832 • P.O. Box 7000 • Carlisle, PA 17013 • Fax: 717-245-7053 • [www.carlisesyntec.com](http://www.carlisesyntec.com)**

Carlisle, Sure-Flex, Sure-White, Sure-Seal, Sure-Weld, Sure-Tough, Sure-Tite, HP-X Fastener, InsulFast, Piranha Plate, SecurTAPE, SAT, FAST, Flexible FAST, FAT, HydroBond, CAV-GRIP, SecurShield and FleeceBACK are trademarks of Carlisle.  
Hinged Target Sump is a trademark of Hunter Panels. InsulFoam, R-Tech and InsulLam are trademarks of Insulfoam. RhinoBond is a registered trademark of OMG, Inc. ENERGY STAR is a registered trademark of the US Government.  
LEED is a registered trademark of the U.S. Green Building Council. SECUROCK is a trademark of USG Corporation. DensDeck and DensDeck Prime are trademarks of Georgia Pacific. Galvalume is a trademark of Bethlehem Steel Corp.  
REPRINT CODE: 606370 - "Carlisle SynTec Systems Product Reference Guide" - 06.17.15 - © 2015 Carlisle.