



(<http://www.ate-electronics.com?lang=en>)

 Italiano (<http://www.ate-electronics.com/prodotti/serie-pr250/>)  
 English (<http://www.ate-electronics.com/products/pr250-series/?lang=en>)

[Home \(http://www.ate-electronics.com/?lang=en\)](http://www.ate-electronics.com/?lang=en)    [Company ▾ \(http://www.ate-electronics.com/azienda/?lang=en\)](http://www.ate-electronics.com/azienda/?lang=en)

[Products ▾ \(http://www.ate-electronics.com/products/?lang=en\)](http://www.ate-electronics.com/products/?lang=en)

[Distributors ▾ \(http://www.ate-electronics.com/distributors/?lang=en\)](http://www.ate-electronics.com/distributors/?lang=en)

[ATE Catalogue \(http://www.ate-electronics.com/catalogo-ate/?lang=en\)](http://www.ate-electronics.com/catalogo-ate/?lang=en)

[Contacts ▾ \(http://www.ate-electronics.com/contacts/?lang=en\)](http://www.ate-electronics.com/contacts/?lang=en)



## PR250 Series

[Company \(http://www.ate-electronics.com/azienda/?lang=en\)](http://www.ate-electronics.com/azienda/?lang=en)

[Home \(http://www.ate-electronics.com?lang=en\)](http://www.ate-electronics.com?lang=en) |

[Products \(http://www.ate-electronics.com/products/?lang=en\)](http://www.ate-electronics.com/products/?lang=en)

| [PR250 Series](#)

## PR250 Series

Thick film power resistors

### Features

Very good ratio Power / Volume

Easy mounting and wiring with significant cost advantages.

Non inductive performance for high frequency applications.

One models for power applications up to 500W.

Suited to ULV94-V0 application.



## Technical Specifications

### - Power rating

250W (heatsink at 100°C)

### - Resistance range

From 1R0 to 1M0hm, E12 series

### - Tolerance

Standard 10%, up to 1% on request

### - Temperature coefficient

±100 ppm/°C

### - Max Work. Voltage

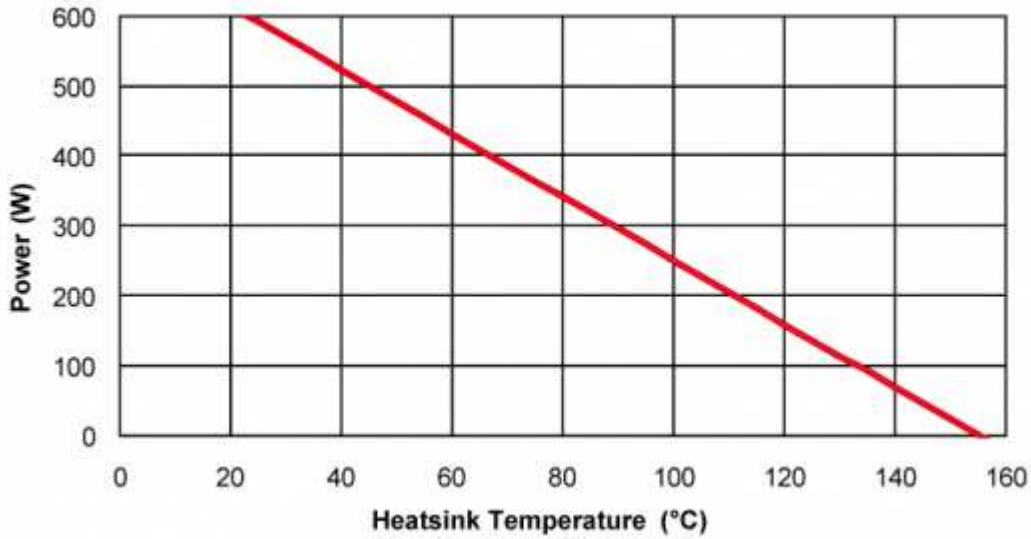
5000 Vac

### - Work Temp. Range

From -55°C to +155°C

### - Dielectric Strength

7000 Vac (12000 Vac x PR250T)



### - Insulation resistance

$> 10^5$  MOhm a 500V

### - Creep distance

42 mm (65 mm x PR250T)

### - Air gap distance

16 mm (29mm x PR250T)

### - Partial discharge

$< 10$  pC @ 5000 Vac

### - Self inductance

80 nH

### - Parallel capacitance

40 pF

### - Capacitance to heatsink

$< 120$  pF

### - Overload

$4 P_n \times 10$  s

### - Thermal resistance

0.15 °C/W



**- Heatsink flatness**

0.05 mm Max

**- Heatsink surface finish**

6.3µm Max

**- Thermal grease**

Required

**- Max torque for contacts**

2 Nm (static)

**- Max torque for mounting**

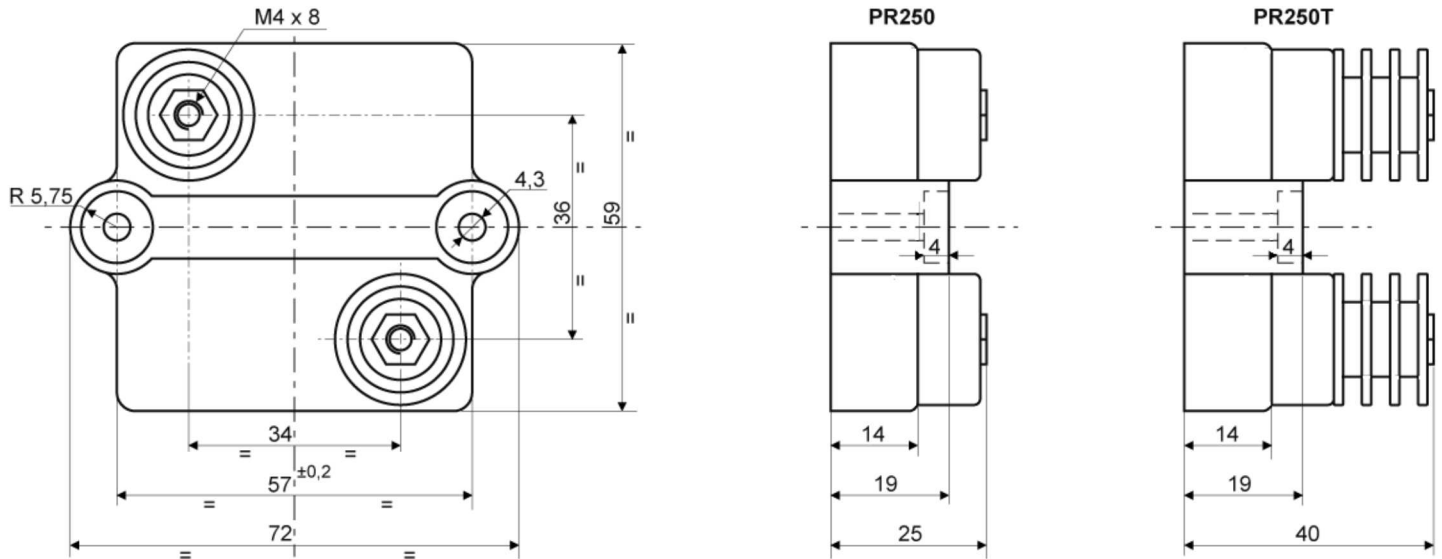
2 Nm (static)

**- Weight**

100 g (130 g x PR250T)

**-Options**

For values R039 <R< 1R0 is available Metal Foil type **PR250M**



Connection and mounting screws supplied with the resistor

- Certificazioni (<http://www.ate-electronics.com/certificazione/>) - Contatti (<http://www.ate-electronics.com/contatti/>)

ATE Electronics Srl - REA 620007 - Registro Imprese di Torino 04253940011 Capitale Sociale 50.000 Euro Interamente Versato

Sede Legale ed Amministrativa : via Ugo Scaletta 13 10094 Giaveno (TO) - Tel. 011.937.85.75 - P.Iva 04253940011

Copyright © 2010 ATE Electronics s.r.l.

© Copyright 2014 - VL WEB Grafica

Italiano (<http://www.ate-electronics.com/prodotti/serie-pr250/>)  
English (<http://www.ate-electronics.com/products/pr250-series/?lang=en>)

Italiano (Italian) (<http://www.ate-electronics.com/prodotti/serie-pr250/>)

English (<http://www.ate-electronics.com/products/pr250-series/?lang=en>)