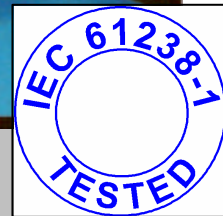


# STAMCOR CATALOGUE

**LOCALLY MANUFACTURED**

**QUALITY COPPER  
LUGS AND FERRULES**



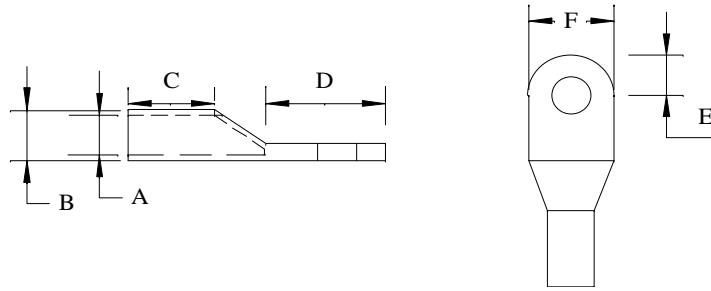
**Stone-Stamcor**  
Bringing Power to your Product

Manufactured in the Republic of South Africa





# Stone-Stamcor



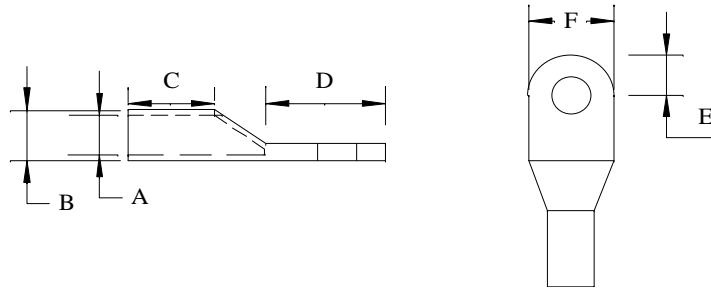
**Table 1 Lugs for Stranded Conductor Cable**

Cat No	Stock Code	Nominal Lug Size mm <sup>2</sup>	Typical Conductors		Stud Size mm	Nominal Dimensions mm					
			Circular Stranded mm	Flexible Stranded mm <sup>2</sup>		Barrel			Spade		
						A	B	C	D	E	F
1.5/3	LS0010	1.5	3/0.81	1	3				9	4.5	7
1.5/4	LS0020				4	1.9	3.8	7	12	4.5	7
1.5/5	LS0030				5				12	4.5	8
1.5/6	LS0040				6				13	5.5	9
2.5/3	LS0060	2.5	3/1.04	1.5	3				8.5	4.5	7
2.5/4	LS0070				4				12	4.5	7
2.5/5	LS0080				5	2.4	3.9	7.3	12	4.5	9
2.5/6	LS0090				6				13	5.5	9.5
2.5/8	LS0100				8				15	7.5	12
4/3	LS0110	4	7/0.86	2.5	3				9	4.5	7
4/4	LS0120				4				12	4.5	7
4/5	LS0130				5	2.8	4.7	8	12	4.5	8.5
4/6	LS0140				6				13	5.5	10
4/8	LS0150				8				17	6.5	13
4/10	LS0160				10			11	19	7.5	14
6/4	LS0170	6	7/1.05	4	4				12	4.5	7.5
6/5	LS0180				5				12	4.5	8.5
6/6	LS0190				6	3.4	5.3	8.5	13	5.5	9.5
6/8	LS0200				8			9.3	17	7	13
6/10	LS0210				10			11	19	7.5	15
10/5	LS0220	10	7/1.36	6	5			10.5	12	4.5	9
10/6	LS0230				6			10.5	13	6	10
10/8	LS0240				8	4.4	6.3	11	17	7.5	13
10/10	LS0250				10			11	19	7.5	15
10/12	LS0260				12			12	20	10	19
16/5	LS0270	16	7/1.72	10	5				13	5.5	10.5
16/6	LS0280				6				13	5.5	11
16/8	LS0290				8	5.5	7.6	12	18	7.5	13
16/10	LS0300				10				20	7.5	15
16/12	LS0310				12				25	10.5	18
16/16	LS0320				16				27	13	24
25/6	LS0330	25	19/1.35	16	6				16	6	14
25/8	LS0340				8				17	8	14
25/10	LS0350		18/1.55		10	6.9	9	15	18	8	16
25/12	LS0360				12				21	11	18
25/16	LS0370				16				27	13	24
35/6	LS0380	35	18/1.59	25	6				18	8	16
35/8	LS0390				8				18	9	16
35/10	LS0400		19/1.55		10	8.2	10.7	15	19	9	16
35/12	LS0410				12				22	10	18
35/16	LS0420				16			16	30	13	24





# Stone-Stamcor



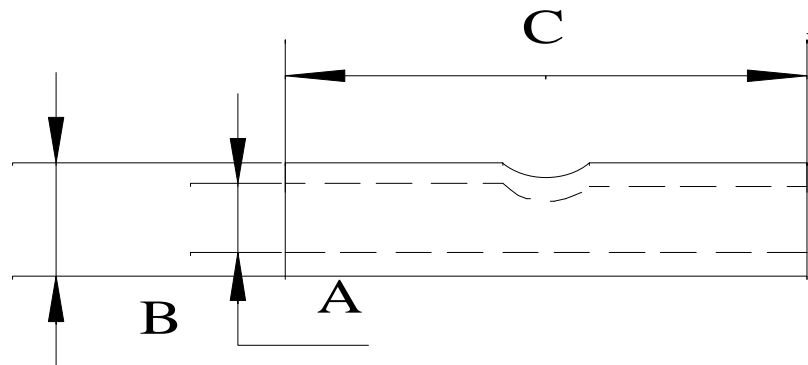
**Table 1 Lugs for Stranded Conductor Cable**

Cat No	Stock Code	Nominal Lug Size mm <sup>2</sup>	Typical Conductors		Stud Size mm	Nominal Dimensions mm								
			Circular Stranded mm	Flexible Stranded mm <sup>2</sup>		Barrel			Spade					
						A I.D	B O.D	C Length	D Length	E Hole Pos.	F Width			
50/6	LS0430	50	18/1.9	35	6			16	17	8	18			
50/8	LS0440				8			16	17	9	18			
50/10	LS0450				10			17	24	10	20			
50/12	LS0460				12	10	12.8	18	24	10	20			
50/16	LS0470				16			18	30	13	26			
50/20	LS0480	20			18	30	13	26						
70/8	LS0490	70	18/2.25	50	8			20.5	20	9.5	21			
70/10	LS0500				10			21	26	11	22			
70/12	LS0510				12	11.7	15	21	28	12	22			
70/16	LS0520				16			22	32	14	28			
70/20	LS0530				20			22	34	15	30			
95/8	LS0540	95	36/1.86	70	8				24	9.5	25			
95/10	LS0550				10				26	13	26			
95/12	LS0560				12	13.5	17.4	23	28	13	26			
95/16	LS0570				16				32	14	28			
95/20	LS0580				20				36	16	30			
120/10	LS0590	120	36/2.08	70/95	10				26	12	27			
120/12	LS0600				12	15.5	19.8	26	28	12	28			
120/16	LS0610				16				32	14	30			
120/20	LS0620				20				36	16	32			
150/10	LS0630				150	36/2.34	95/120	10				31	12	31
150/12	LS0640	12	17	22				27	33	16	32			
150/16	LS0650	16							35	16	32			
150/20	LS0660	20							36	16	32			
185/10	LS0670	185	36/2.59	120/150				10				29	12.5	34
185/12	LS0680				12	19	24.4	29	31	16	34			
185/16	LS0690				16				34	16	36			
185/20	LS0700				20				40	19	36			
240/10	LS0710				240	60/2.23	150/185	10				16	16	40
240/12	LS0720	12	21.5	27.7				33	16	16	40			
240/16	LS0730	16							16	20	40			
240/20	LS0740	20							20	20	40			
300/0	LS0745	300	60/2.55	185/240								45	*	45
300/10	LS0750				10				35	15	45			
300/12	LS0760				12	24.5	31.3	35	35	15	45			
300/16	LS0770				16				45	15	45			
300/20	LS0780				20				45	18	45			
400/0	LS0790	400	91/2.39	240/300		27.5	35.6	41	47	*	49			
400/16	LS0795				16				47	24	51			
500/0	LS0800				500	91/2.67	300/400	**	31.6	40	41.5	54	*	58
630/0	LS0810				630	127/2.54	400/500	**	34.5	44.6	53	65	*	64
800/0	LS0820				800	127/2.87	630	**	40	51.2	68	75	*	73
1000/0	LS0830	1000	127/3.22		**	44	56.6	75	75	*	81			



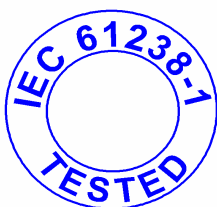


# Stone-Stamcor



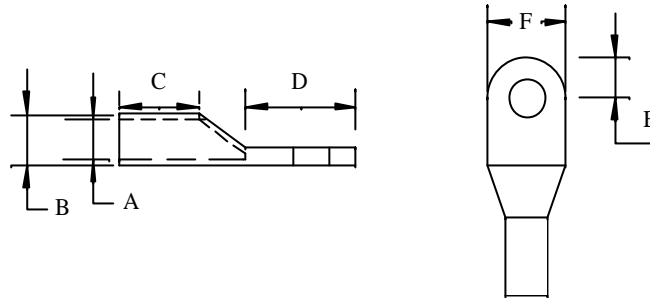
**Table 4 - Ferrules for Stranded Conductor Cable**

Cat No	Stock Code	Nominal Dimensions mm			Typical Conductors Circular Stranded mm	Nominal Sleeve Size mm <sup>2</sup>
		A	B	C		
		I.D	O.D	Length		
F1.5	FS0010	1.9	3.6	12.7	3/0.81	1.5
F2.5	FS0020	2.4	3.9	14.3	3/1.04	2.5
F4	FS0030	2.8	4.7	16	7/0.86	4
F6	FS0040	3.4	5.3	17.7	7/1.05	6
F10	FS0050	4.4	6.3	19.8	7/1.36	10
F16	FS0060	5.5	7.6	22	7/1.72	16
F25	FS0070	6.9	9	24.7	18/1.35	25
F35	FS0080	8.2	10.7	27.5	18/1.59	35
F50	FS0090	10	12.8	30.8	18/1.90	50
F70	FS0100	11.7	15	34.4	18/2.25	70
F95	FS0110	13.5	17.4	38.6	36/1.86	95
F120	FS0120	15.5	19.8	42.9	36/2.08	120
F150	FS0130	17	22	48.1	36/2.34	150
F185	FS0140	19	24.4	53.6	36/2.59	185
F240	FS0150	21.5	27.7	60	60/2.23	240
F300	FS0160	24.5	31.3	67	60/2.55	300
F400	FS0170	27.5	35.6	80	91/2.39	400
F500	FS0180	31.6	40	90	91/2.67	500
F630	FS0190	34.5	44.6	110	127/2.54	630
F800	FS0200	40	51.2	130	127/2.87	800
F1000	FS0210	44	56.6	154	127/3.22	1000



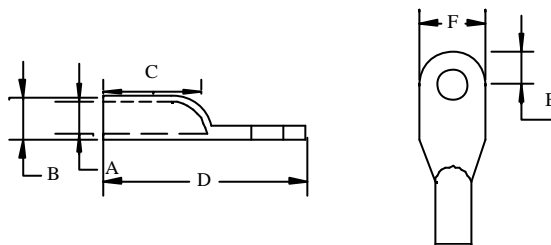


# Stone-Stamcor



**Table 2 Heavy Duty Lugs for Compacted XLPE Cable**

Cat No	Stock Code	Nominal Lug Size mm <sup>2</sup>	SABS 1339-1981 Nominal Dia Over Cond.	Stud Size mm	Nominal Dimensions mm					
					Barrel			Spade		
					A	B	C	D	E	F
L35	XL0050	35	7.10	**	7.30	10.50	16.00	24.00	11.00	19.00
L50	XL0090	50	8.50	**	8.75	12.30	20.00	24.00	11.00	19.00
L70	XL0120	70	10.10	**	10.40	14.60	21.00	27.00	14.00	20.00
L95	XL0180	95	11.80	**	12.15	17.00	24.00	28.00	14.00	24.00
L120	XL0240	120	13.20	**	14.00	19.10	26.00	28.00	14.00	26.00
L150	XL0290	150	14.80	**	15.25	21.30	31.00	37.00	18.00	30.00
L185	XL0330	185	16.40	**	17.00	23.70	34.00	40.00	19.00	33.00
L240	XL0380	240	18.70	**	20.00	27.10	34.00	41.00	19.00	37.00
L300	XL0420	300	20.90	**	21.63	30.50	38.00	48.00	20.00	42.50
L400	XL0460	400	24.10	**	24.50	34.64	51.00	49.00	23.50	48.00
L500	XL0480	500	27.00	**	27.50	38.90	51.00	52.00	25.00	54.00
L630	XL0490	630		**	33.00	45.00	53.00	65.00	28.00	64.00



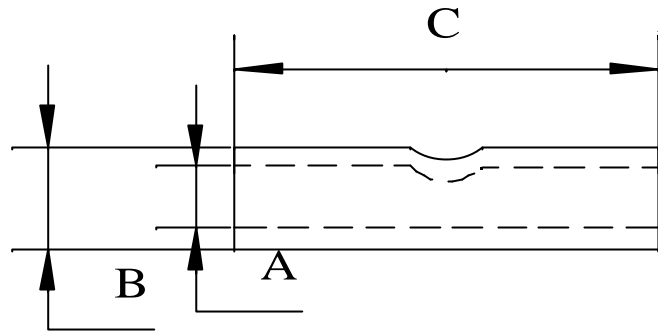
**Table 3 Solder Lugs**

Cat No	Stock Code	Nominal Lug Size mm <sup>2</sup>	Stud Size mm	Barrel			Overall	Spade	
				A	B	C	D	E	F
				I.D	O.D	Length	Length	Hole Pos.	Width
60AMP	SL5010	50	10	9.55	11.36	15.00	47.00	9.60	17.00
100AMP	SL5020	70	11	11.88	13.96	17.00	59.00	12.80	20.50
150AMP	SL5030	95	12	14.30	17.20	20.00	68.00	14.20	25.50
200AMP	SL5040	120	14	16.70	19.90	28.00	78.00	17.60	29.50
300AMP	SL5060	150	17	20.65	24.40	33.00	87.00	20.70	36.00
400AMP	SL5070	240	20	23.80	27.86	36.00	104.00	23.80	41.50
500AMP	SL5080	300	21	26.18	31.50	40.00	108.00	27.20	46.00





# Stone-Stamcor



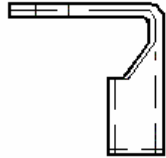
**Table 5 - Heavy Duty Ferrules for Compacted XLPE Cable**

Cat No	Stock Code	Nominal Dimensions mm			Nominal Sleeve Size mm <sup>2</sup>
		A I.D	B O.D	C Length	
F35	XF0020	7.30	10.50	38.00	35.00
F50	XF0030	8.75	12.30	42.00	50.00
F70	XF0040	10.40	14.60	43.00	70.00
F95	XF0050	12.10	17.00	45.00	95.00
F120	XF0060	14.00	19.10	55.00	120.00
F150	XF0070	15.25	21.30	58.00	150.00
F185	XF0080	17.00	23.70	64.00	185.00
F240	XF0090	20.00	27.10	70.00	240.00
F300	XF0100	21.63	30.50	75.00	300.00
F400	XF0110	24.50	34.60	80.00	400.00
F500	XF0120	27.50	38.90	90.00	500.00
F630	XF0130	33.00	45.00	100.00	630.00

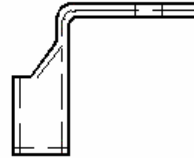


# SPECIAL APPLICATION LUGS AND FERRULES

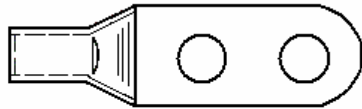
Special application products can be developed to suit a customer's specific application. Examples of these are detailed below which are manufactured to the customer's dimensions.



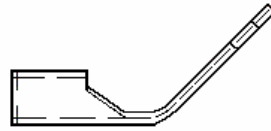
**90 DEGREE INWARD SPADE**



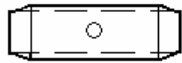
**90 DEGREE OUTWARD SPADE**



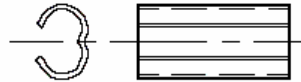
**LONG SPADE DOUBLE HOLE**



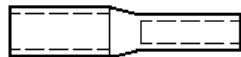
**ANGLED SPADE**



**TAPERED FERRULE**



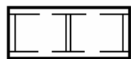
**WEAKBACK FERRULE**



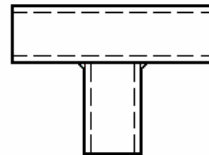
**REDUCING FERRULE MACHINED**



**REDUCING FERRULE BRAZED**



**SOLID CENTRE FERRULE**



**"T" FERRULE BRAZED**



# Stone-Stamcor (Pty)Ltd

## Stamcor Electric Quality

Our Products are manufactured from electrolytic copper and processed under stringent quality checks to ensure that dimensional accuracy is maintained, independent testing of our products is in accordance with I.E.C. 61238-1. All our lugs and ferrules are electro tinned which ensures effective sealing of seams on the spade.

Our company is committed to quality and the principles of the ISO 9000 Quality Assurance Standard which we have adopted.

## Stamcor Electric Range

A Complete range of sizes is manufactured to suit conductors from 1,5mm<sup>2</sup> to 1000mm<sup>2</sup> with spade holes to match all stud diameters.

**Stamcor Electric** also offers a special series of lugs and ferrules to suit Cross Linked Polyethylene (XLPE) and heavy duty cable.

## Special Application Products

In addition to our standard range of lugs and ferrules, we also manufacture many special application connectors to suit customer requirements. These include 90° angled spade, 45° angled spade, long barrels, double barrels and long spade lugs. Also included are weakback, solid centre, reducing ferrules and 'T' ferrules.

Each connector is developed to specific requirements and will be processed, inspected and tested in accordance with our quality standards.

## Crimping Tools

**Stamcor Electric** offers a complete range of hand and hydraulic tools for indent and hexagonal crimping of all copper and aluminium lugs and ferrules from 1,5mm<sup>2</sup> to 1000mm<sup>2</sup>.

**CONTACT OUR  
REPRESENTATIVE FOR  
FURTHER INFORMATION  
ON TOOL APPLICATIONS**

