


ELECTRICAL CHARACTERISTICS:

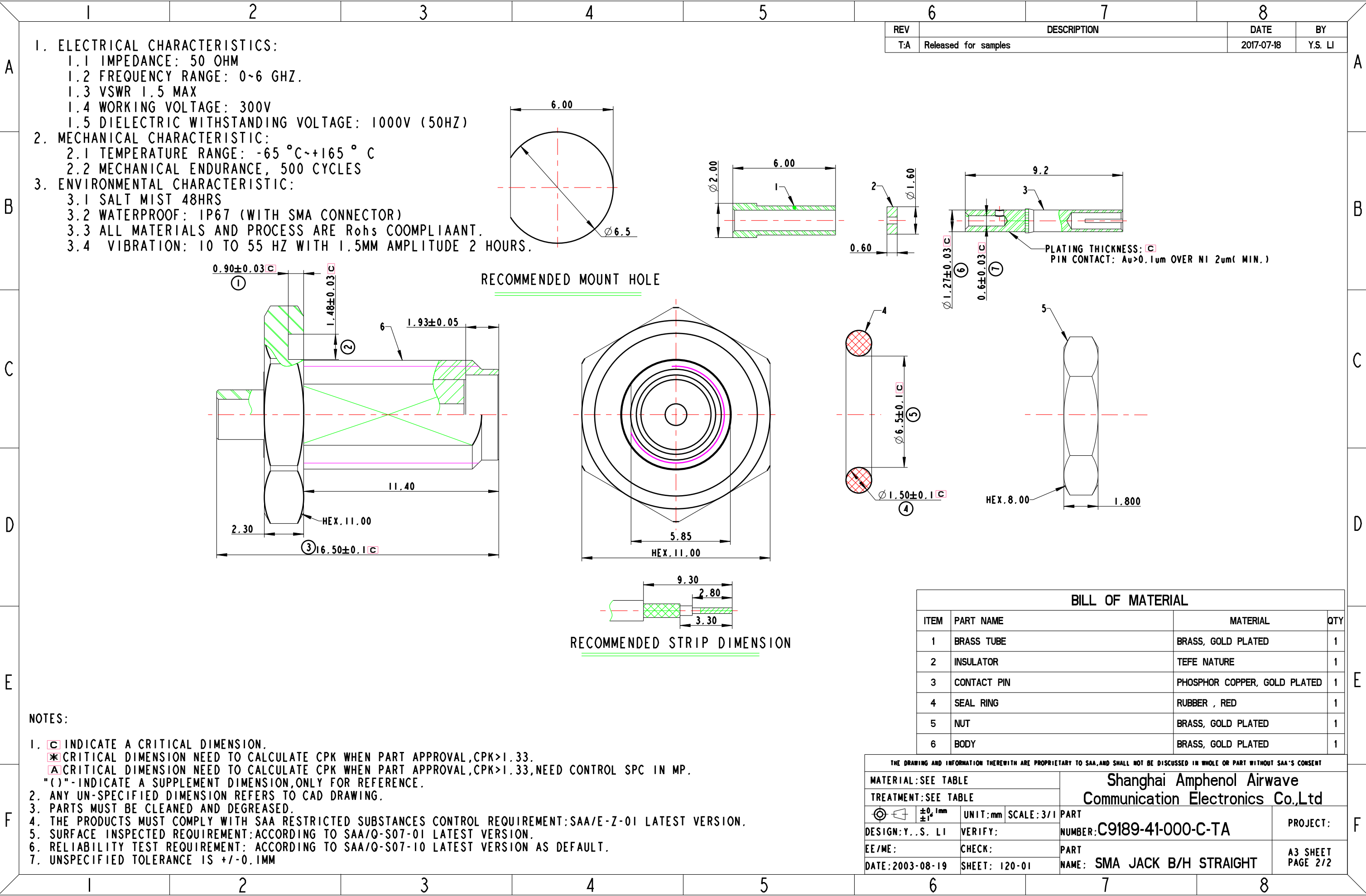
- 1.1 IMPEDANCE: 50 OHM
- 1.2 FREQUENCY RANGE: DC~3 GHz.
- 1.3 VSWR:
 - 1.15 MAX. @ 1.0 GHz
 - 1.25 MAX. @ 2.0 GHz
- 1.4 INSERTION LOSS
 - 0.3 dB MAX. @ 1.0 GHz
 - 0.5 dB MAX. @ 2.0 GHz
- 1.5 INSULATION RESISTANCE: 500MΩ MIN.

NOTES:

- ① INDICATE A CRITICAL DIMENSION.
 - * CRITICAL DIMENSION NEED TO CALCULATE CPK WHEN PART APPROVAL, CPK > 1.33.
 - △ CRITICAL DIMENSION NEED TO CALCULATE CPK WHEN PART APPROVAL, CPK > 1.33, NEED CONTROL SPC IN MP.
- "()" - INDICATE A SUPPLEMENT DIMENSION, ONLY FOR REFERENCE.
- ANY UN-SPECIFIED DIMENSION REFERS TO CAD DRAWING.
- PARTS MUST BE CLEANED AND DEGREASED.
- THE PRODUCTS MUST COMPLY WITH SAA RESTRICTED SUBSTANCES CONTROL REQUIREMENT: SAA/E-Z-01 LATEST VERSION.
- SURFACE INSPECTED REQUIREMENT: ACCORDING TO SAA/Q-S07-01 LATEST VERSION.
- RELIABILITY TEST REQUIREMENT: ACCORDING TO SAA/Q-S07-10 LATEST VERSION AS DEFAULT.
- MECHANICAL CHARACTERISTIC:
 - 7.1 SMA CONNECTOR WATER PROOF CLASS: IP65
 - 7.2 TEMPERATURE RANGE: -40°C~+90°C
 - 7.3 VIBRATION: 10 TO 55 HZ WITH 1.5MM AMPLITUDE 2 HOURS.
- ALL MATERIALS AND PROCESS ARE ROHS COMPLIANT

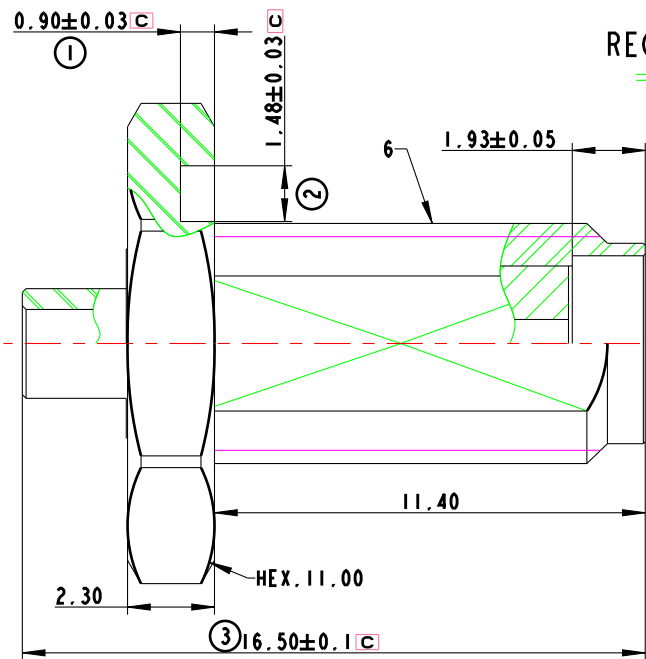
ITEM	P/N	PART NAME	MATERIAL	QTY
1	LMG1780G-009	HEX. NUT	BRASS, GOLD PLATED	1
2	DP01130G-005	LOCK WASHER	PHOSPHOR COPPER, GOLD PLATED	1
3	SF5200137-A69	SMA JACK B/H STRAIGHT FOR RF137 CABLE	SEE DRAWING SHEET 2/2	1
4	CR01371-011	COAXIAL CABLE RF137, BLACK	NORMAL COAXIAL RF CABLE 137, BLACK	1
5	QTMS100137-A900	MHF CONNECTOR, I-PEX 20351 FOR RF137 CABLE	REFER TO THE PUBLISHED SPEC FORM I-PEX	1

THE DRAWING AND INFORMATION THEREWITH ARE PROPRIETARY TO SAA, AND SHALL NOT BE DISCUSSED IN WHOLE OR PART WITHOUT SAA'S CONSENT									
MATERIAL:SEE TABLE				Shanghai Amphenol Airwave Communication Electronics Co.,Ltd					
TREATMENT:SEE TABLE									
		±0.15mm ±1°		UNIT:mm	SCALE:3/1	PART			PROJECT:
DESIGN:Y. S. LI		VERIFY:		NUMBER:IC9189-41-000-C-TA					
EE/ME:		CHECK:		PART					
DATE:2017-07-18		SHEET: 120-01		NAME: 60MM CABEL+CONNECTOR			A3 SHEET PAGE 1/2		

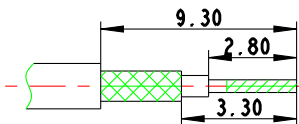
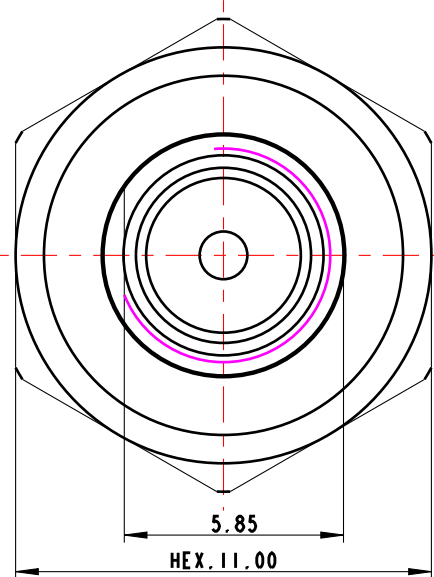


1. ELECTRICAL CHARACTERISTICS:
- 1.1 IMPEDANCE: 50 OHM
 - 1.2 FREQUENCY RANGE: 0~6 GHZ.
 - 1.3 VSWR 1.5 MAX
 - 1.4 WORKING VOLTAGE: 300V
 - 1.5 DIELECTRIC WITHSTANDING VOLTAGE: 1000V (50HZ)
2. MECHANICAL CHARACTERISTIC:
- 2.1 TEMPERATURE RANGE: -65 °C~+165 °C
 - 2.2 MECHANICAL ENDURANCE, 500 CYCLES
3. ENVIRONMENTAL CHARACTERISTIC:
- 3.1 SALT MIST 48HRS
 - 3.2 WATERPROOF: IP67 (WITH SMA CONNECTOR)
 - 3.3 ALL MATERIALS AND PROCESS ARE Rohs COOMPLIAANT.
 - 3.4 VIBRATION: 10 TO 55 HZ WITH 1.5MM AMPLITUDE 2 HOURS.

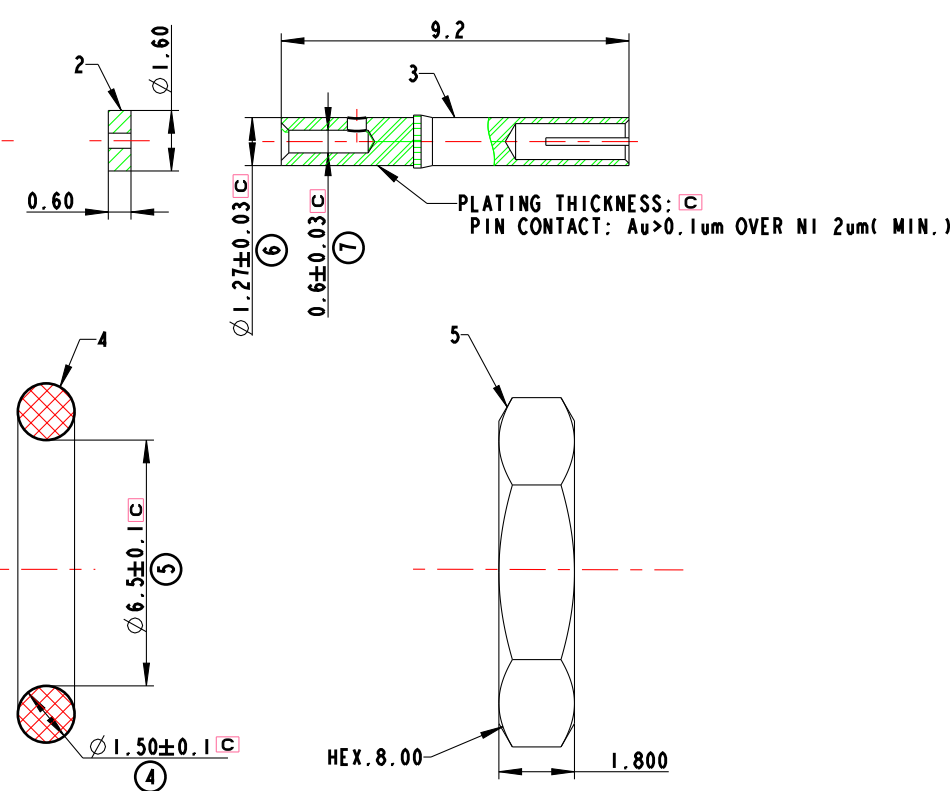
REV	DESCRIPTION	DATE	BY
T:A	Released for samples	2017-07-18	Y.S. LI



RECOMMENDED MOUNT HOLE

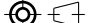


RECOMMENDED STRIP DIMENSION



BILL OF MATERIAL			
ITEM	PART NAME	MATERIAL	QTY
1	BRASS TUBE	BRASS, GOLD PLATED	1
2	INSULATOR	TEFE NATURE	1
3	CONTACT PIN	PHOSPHOR COPPER, GOLD PLATED	1
4	SEAL RING	RUBBER , RED	1
5	NUT	BRASS, GOLD PLATED	1
6	BODY	BRASS, GOLD PLATED	1

- NOTES:
- 1. C INDICATE A CRITICAL DIMENSION.
 - * CRITICAL DIMENSION NEED TO CALCULATE CPK WHEN PART APPROVAL,CPK>1.33.
 - A CRITICAL DIMENSION NEED TO CALCULATE CPK WHEN PART APPROVAL,CPK>1.33,NEED CONTROL SPC IN MP.
 - "()" - INDICATE A SUPPLEMENT DIMENSION,ONLY FOR REFERENCE.
 - 2. ANY UN-SPECIFIED DIMENSION REFERS TO CAD DRAWING.
 - 3. PARTS MUST BE CLEANED AND DEGREASED.
 - 4. THE PRODUCTS MUST COMPLY WITH SAA RESTRICTED SUBSTANCES CONTROL REQUIREMENT:SAA/E-Z-01 LATEST VERSION.
 - 5. SURFACE INSPECTED REQUIREMENT:ACCORDING TO SAA/Q-S07-01 LATEST VERSION.
 - 6. RELIABILITY TEST REQUIREMENT: ACCORDING TO SAA/Q-S07-10 LATEST VERSION AS DEFAULT.
 - 7. UNSPECIFIED TOLERANCE IS +/-0.1MM

THE DRAWING AND INFORMATION THEREWITH ARE PROPRIETARY TO SAA,AND SHALL NOT BE DISCUSSED IN WHOLE OR PART WITHOUT SAA'S CONSENT					
MATERIAL:SEE TABLE			Shanghai Amphenol Airwave Communication Electronics Co.,Ltd		
TREATMENT:SEE TABLE					
	$\pm 0.1\text{mm}$ ± 1	UNIT:mm	SCALE:3/1	PART	PROJECT:
DESIGN:Y. S. LI	VERIFY:	NUMBER:C9189-41-000-C-TA			
EE/ME:	CHECK:	PART		NAME: SMA JACK B/H STRAIGHT	A3 SHEET PAGE 2/2
DATE:2003-08-19	SHEET: 120-01				